

# NTF2 rabbit pAb

Cat No.:ES4440

For research use only

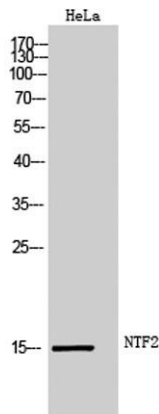
## Overview

Product Name	NTF2 rabbit pAb
Host species	Rabbit
Applications	WB;IHC;IF;ELISA
Species Cross-Reactivity	Human;Mouse;Rat
Recommended dilutions	Western Blot: 1/500 - 1/2000. Immunohistochemistry: 1/100 - 1/300. ELISA: 1/20000. Not yet tested in other applications.
Immunogen	The antiserum was produced against synthesized peptide derived from human NUTF2. AA range:67-116
Specificity	NTF2 Polyclonal Antibody detects endogenous levels of NTF2 protein.
Formulation	Liquid in PBS containing 50% glycerol, 0.5% BSA and 0.02% sodium azide.
Storage	Store at -20°C. Avoid repeated freeze-thaw cycles.
Protein Name	Nuclear transport factor 2
Gene Name	NUTF2
Cellular localization	Cytoplasm, cytosol . Nucleus outer membrane . Nucleus, nuclear pore complex . Nucleus inner membrane . Nucleus, nucleoplasm . At steady state it is essentially nucleoplasmic, enriched in nucleoplasmic foci. .
Purification	The antibody was affinity-purified from rabbit antiserum by affinity-chromatography using epitope-specific immunogen.
Clonality	Polyclonal
Concentration	1 mg/ml
Observed band	15kD
Human Gene ID	10204
Human Swiss-Prot Number	P61970
Alternative Names	NUTF2; NTF2; Nuclear transport factor 2; NTF-2; Placental protein 15; PP15
Background	This gene encodes a cytosolic factor that facilitates

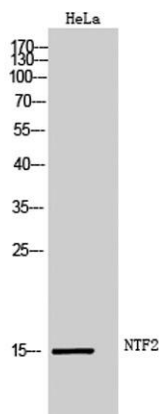


protein transport into the nucleus. The encoded protein is required for nuclear import of the small Ras-like GTPase, Ran which is involved in numerous cellular processes. This protein also interacts with the nuclear pore complex glycoprotein p62. [provided by RefSeq, Apr 2016],

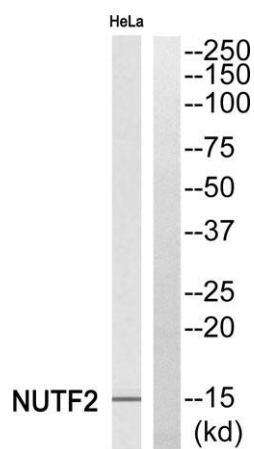
Western Blot analysis of HeLa cells using NTF2 Polyclonal Antibody



Western Blot analysis of HeLa cells using NTF2 Polyclonal Antibody



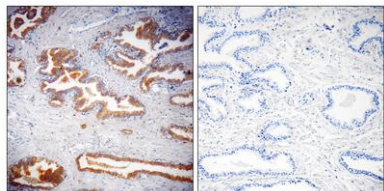
Western blot analysis of NUTF2 Antibody. The lane on the right is blocked with the NUTF2 peptide.





**ELK Biotechnology**

Immunohistochemistry analysis of paraffin-embedded human prostate, using NUTF2 Antibody. The lane on the right is blocked with the NUTF2 peptide.



+86-27-59760950

[ELKbio@ELKbiotech.com](mailto:ELKbio@ELKbiotech.com)

[www.elkbiotech.com](http://www.elkbiotech.com)

23-2, No.388 Gaoxin 2nd Road,Wuhan East Lake Hi-tech Development Zone, Hubei , P.R.C