



WAVE2 rabbit pAb

Cat No.:ES4431

For research use only

Overview

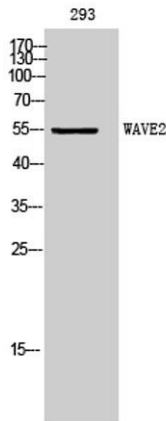
Product Name	WAVE2 rabbit pAb
Host species	Rabbit
Applications	WB;IHC;IF;ELISA
Species Cross-Reactivity	Human;Mouse;Rat
Recommended dilutions	Western Blot: 1/500 - 1/2000. Immunohistochemistry: 1/100 - 1/300. ELISA: 1/5000. Not yet tested in other applications.
Immunogen	The antiserum was produced against synthesized peptide derived from human WASF2. AA range:141-190
Specificity	WAVE2 Polyclonal Antibody detects endogenous levels of WAVE2 protein.
Formulation	Liquid in PBS containing 50% glycerol, 0.5% BSA and 0.02% sodium azide.
Storage	Store at -20°C. Avoid repeated freeze-thaw cycles.
Protein Name	Wiskott-Aldrich syndrome protein family member 2
Gene Name	WASF2
Cellular localization	Cytoplasm, cytoskeleton . Cell projection, lamellipodium . Basolateral cell membrane . At the interface between the lamellipodial actin meshwork and the membrane. .
Purification	The antibody was affinity-purified from rabbit antiserum by affinity-chromatography using epitope-specific immunogen.
Clonality	Polyclonal
Concentration	1 mg/ml
Observed band	55kD
Human Gene ID	10163
Human Swiss-Prot Number	Q9Y6W5
Alternative Names	WASF2; WAVE2; Wiskott-Aldrich syndrome protein family member 2; WASP family protein member 2; Protein WAVE-2; Verprolin homology domain-containing protein 2



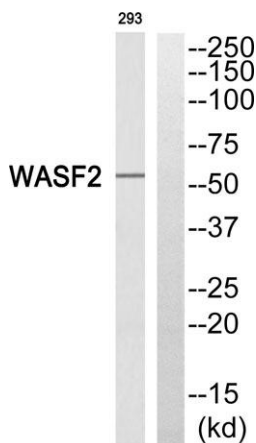


Background

This gene encodes a member of the Wiskott-Aldrich syndrome protein family. The gene product is a protein that forms a multiprotein complex that links receptor kinases and actin. Binding to actin occurs through a C-terminal verprolin homology domain in all family members. The multiprotein complex serves to transduce signals that involve changes in cell shape, motility or function. The published map location (PMID:10381382) has been changed based on recent genomic sequence comparisons, which indicate that the expressed gene is located on chromosome 1, and a pseudogene may be located on chromosome X. Two transcript variants encoding different isoforms have been found for this gene. [provided by RefSeq, Jan 2011],



Western Blot analysis of 293 cells using WAVE2 Polyclonal Antibody. Secondary antibody(catalog#:RS0002) was diluted at 1:20000



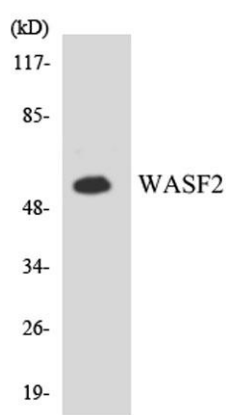
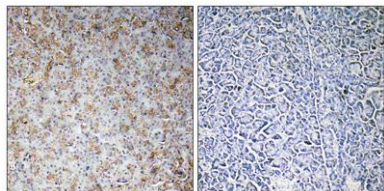
Western blot analysis of WASF2 Antibody. The lane on the right is blocked with the WASF2 peptide.





ELK Biotechnology

Immunohistochemistry analysis of paraffin-embedded human pancreas, using WASF2 Antibody. The lane on the right is blocked with the WASF2 peptide.



Western blot analysis of the lysates from K562 cells using WASF2 antibody.



+86-27-59760950

ELKbio@ELKbiotech.com

www.elkbiotech.com

23-2, No.388 Gaoxin 2nd Road, Wuhan East Lake Hi-tech Development Zone, Hubei, P.R.C