

CD300d rabbit pAb

Cat No.:ES4366

For research use only

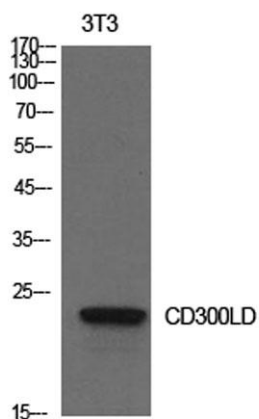
Overview

| | |
|--------------------------|--|
| Product Name | CD300d rabbit pAb |
| Host species | Rabbit |
| Applications | WB;ELISA |
| Species Cross-Reactivity | Human;Rat;Mouse; |
| Recommended dilutions | Western Blot: 1/500 - 1/2000. ELISA: 1/10000. Not yet tested in other applications. |
| Immunogen | The antiserum was produced against synthesized peptide derived from the Internal region of human CD300LD. AA range:61-110 |
| Specificity | CD300d Polyclonal Antibody detects endogenous levels of CD300d protein. |
| Formulation | Liquid in PBS containing 50% glycerol, 0.5% BSA and 0.02% sodium azide. |
| Storage | Store at -20°C. Avoid repeated freeze-thaw cycles. |
| Protein Name | CMRF35-like molecule 4 |
| Gene Name | CD300LD |
| Cellular localization | Cell membrane ; Single-pass type I membrane protein . Cell surface localization requires the ITAM-bearing Fc receptor FCER1G to overcome ER retention. |
| Purification | The antibody was affinity-purified from rabbit antiserum by affinity-chromatography using epitope-specific immunogen. |
| Clonality | Polyclonal |
| Concentration | 1 mg/ml |
| Observed band | 22kD |
| Human Gene ID | 100131439 |
| Human Swiss-Prot Number | Q6UXZ3 |
| Alternative Names | CD300LD; CD300D; CMRF35A4; CMRF35-like molecule 4; CLM-4; CD300 antigen-like family member D; CMRF35-A4; CD300d |
| Background | similarity:Belongs to the CD300 family.,similarity:Contains 1 Ig-like V-type |

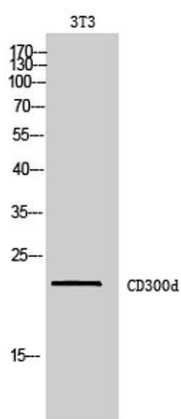




(immunoglobulin-like) domain.,



Western Blot analysis of NIH-3T3 cells using CD300d Polyclonal Antibody. Secondary antibody(catalog#:RS0002) was diluted at 1:20000



Western Blot analysis of 3T3 cells using CD300d Polyclonal Antibody. Secondary antibody(catalog#:RS0002) was diluted at 1:20000

