

CD305 rabbit pAb

Cat No.:ES4364

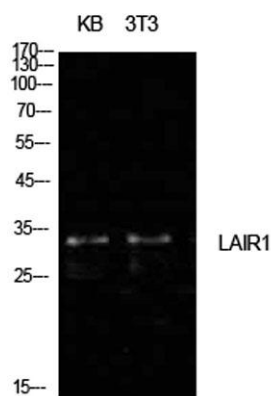
For research use only

Overview

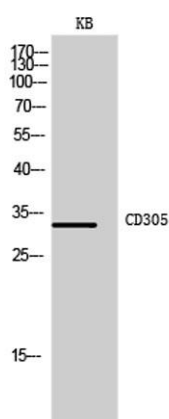
Product Name	CD305 rabbit pAb
Host species	Rabbit
Applications	WB;ELISA
Species Cross-Reactivity	Human;Rat;Mouse;
Recommended dilutions	Western Blot: 1/500 - 1/2000. ELISA: 1/10000. Not yet tested in other applications.
Immunogen	The antiserum was produced against synthesized peptide derived from the Internal region of human LAIR1. AA range:21-70
Specificity	CD305 Polyclonal Antibody detects endogenous levels of CD305 protein.
Formulation	Liquid in PBS containing 50% glycerol, 0.5% BSA and 0.02% sodium azide.
Storage	Store at -20°C. Avoid repeated freeze-thaw cycles.
Protein Name	Leukocyte-associated immunoglobulin-like receptor 1
Gene Name	LAIR1
Cellular localization	Cell membrane ; Single-pass type I membrane protein .
Purification	The antibody was affinity-purified from rabbit antiserum by affinity-chromatography using epitope-specific immunogen.
Clonality	Polyclonal
Concentration	1 mg/ml
Observed band	32kD
Human Gene ID	3903
Human Swiss-Prot Number	Q6GTX8
Alternative Names	LAIR1; CD305; Leukocyte-associated immunoglobulin-like receptor 1; LAIR-1; hLAIR1; CD305
Background	The protein encoded by this gene is an inhibitory receptor found on peripheral mononuclear cells, including natural killer cells, T cells, and B cells.



Inhibitory receptors regulate the immune response to prevent lysis of cells recognized as self. The gene is a member of both the immunoglobulin superfamily and the leukocyte-associated inhibitory receptor family. The gene maps to a region of 19q13.4 called the leukocyte receptor cluster, which contains at least 29 genes encoding leukocyte-expressed receptors of the immunoglobulin superfamily. The encoded protein has been identified as an anchor for tyrosine phosphatase SHP-1, and may induce cell death in myeloid leukemias. Alternative splicing results in multiple transcript variants. [provided by RefSeq, Jan 2014],



Western Blot analysis of KB, NIH-3T3 cells using CD305 Polyclonal Antibody. Secondary antibody(catalog#:RS0002) was diluted at 1:20000



Western Blot analysis of KB cells using CD305 Polyclonal Antibody. Secondary antibody(catalog#:RS0002) was diluted at 1:20000

