

CD240d rabbit pAb

Cat No.:ES4356

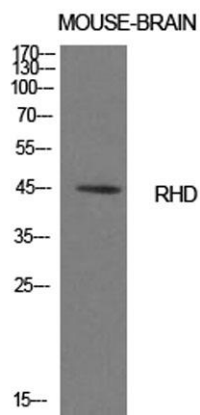
For research use only

Overview

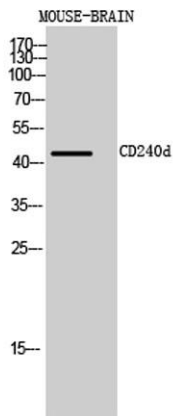
Product Name	CD240d rabbit pAb
Host species	Rabbit
Applications	WB;ELISA
Species Cross-Reactivity	Human;Rat;Mouse;
Recommended dilutions	Western Blot: 1/500 - 1/2000. ELISA: 1/10000. Not yet tested in other applications.
Immunogen	Synthesized peptide derived from Blood group Rh(D) polypeptide at AA range: 161-210
Specificity	CD240d Polyclonal Antibody detects endogenous levels of CD240d protein.
Formulation	Liquid in PBS containing 50% glycerol, 0.5% BSA and 0.02% sodium azide.
Storage	Store at -20°C. Avoid repeated freeze-thaw cycles.
Protein Name	Blood group Rh(D) polypeptide
Gene Name	RHD
Cellular localization	Cell membrane ; Multi-pass membrane protein .
Purification	The antibody was affinity-purified from rabbit antiserum by affinity-chromatography using epitope-specific immunogen.
Clonality	Polyclonal
Concentration	1 mg/ml
Observed band	45kD
Human Gene ID	6007
Human Swiss-Prot Number	Q02161
Alternative Names	RHD; Blood group Rh(D) polypeptide; RHXIII; Rh polypeptide 2; RhPII; Rhesus D antigen; CD240D
Background	The Rh blood group system is the second most clinically significant of the blood groups, second only to ABO. It is also the most polymorphic of the blood groups, with variations due to deletions, gene conversions, and missense mutations. The Rh blood group includes this gene, which encodes the RhD protein, and a second gene that encodes both the



RhC and RhE antigens on a single polypeptide. The two genes, and a third unrelated gene, are found in a cluster on chromosome 1. The classification of Rh-positive and Rh-negative individuals is determined by the presence or absence of the highly immunogenic RhD protein on the surface of erythrocytes. Multiple transcript variants encoding different isoforms have been found for this gene. [provided by RefSeq, Jul 2008],



Western Blot analysis of mouse brain cells using CD240d Polyclonal Antibody. Antibody was diluted at 1:1000. Secondary antibody(catalog#:RS0002) was diluted at 1:20000



Western Blot analysis of MOUSE-BRAIN cells using CD240d Polyclonal Antibody diluted at 1:1000. Secondary antibody(catalog#:RS0002) was diluted at 1:20000

