

# IL-13R $\alpha$ 2 rabbit pAb

Cat No.:ES4346

For research use only

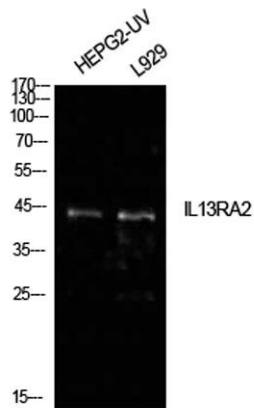
## Overview

Product Name	IL-13R $\alpha$ 2 rabbit pAb
Host species	Rabbit
Applications	WB;IHC;IF;ELISA
Species Cross-Reactivity	Human;Rat;Mouse;
Recommended dilutions	Western Blot: 1/500 - 1/2000. IHC-p: 1:100-1:300. ELISA: 1/10000. Not yet tested in other applications.
Immunogen	Synthesized peptide derived from Interleukin-13 receptor subunit alpha-2 at AA range: 241-290
Specificity	IL-13R $\alpha$ 2 Polyclonal Antibody detects endogenous levels of IL-13R $\alpha$ 2 protein.
Formulation	Liquid in PBS containing 50% glycerol, 0.5% BSA and 0.02% sodium azide.
Storage	Store at -20°C. Avoid repeated freeze-thaw cycles.
Protein Name	Interleukin-13 receptor subunit alpha-2
Gene Name	IL13RA2
Cellular localization	Membrane; Single-pass type I membrane protein.
Purification	The antibody was affinity-purified from rabbit antiserum by affinity-chromatography using epitope-specific immunogen.
Clonality	Polyclonal
Concentration	1 mg/ml
Observed band	44kD
Human Gene ID	3598
Human Swiss-Prot Number	Q14627
Alternative Names	IL13RA2; IL13R; Interleukin-13 receptor subunit alpha-2; IL-13 receptor subunit alpha-2; IL-13R subunit alpha-2; IL-13R-alpha-2; IL-13RA2; Interleukin-13-binding protein; CD213a2
Background	The protein encoded by this gene is closely related to IL13RA1, a subunit of the interleukin 13 receptor complex. This protein binds IL13 with high affinity, but lacks cytoplasmic domain, and does not appear to function as a signal mediator. It is reported to

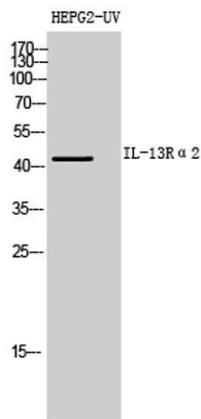


play a role in the internalization of IL13. [provided by RefSeq, Jul 2008],

Western Blot analysis of HepG2(UV), L929 cells using IL-13R $\alpha$ 2 Polyclonal Antibody. Antibody was diluted at 1:500. Secondary antibody(catalog#:RS0002) was diluted at 1:20000



Western Blot analysis of HEPG2-UV cells using IL-13R $\alpha$ 2 Polyclonal Antibody diluted at 1:500. Secondary antibody(catalog#:RS0002) was diluted at 1:20000



Immunohistochemical analysis of paraffin-embedded human-lung, antibody was diluted at 1:100

