

# Integrin $\alpha$ 2 rabbit pAb

Cat No.:ES4318

For research use only

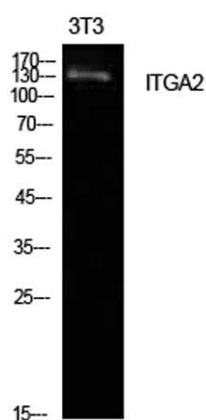
## Overview

Product Name	Integrin $\alpha$ 2 rabbit pAb
Host species	Rabbit
Applications	WB;IHC;IF;ELISA
Species Cross-Reactivity	Human;Mouse;Rat
Recommended dilutions	Western Blot: 1/500 - 1/2000. IHC-p: 1:100-1:300. ELISA: 1/10000. Not yet tested in other applications.
Immunogen	The antiserum was produced against synthesized peptide derived from the C-terminal region of human ITGA2. AA range:1081-1130
Specificity	Integrin $\alpha$ 2 Polyclonal Antibody detects endogenous levels of Integrin $\alpha$ 2 protein.
Formulation	Liquid in PBS containing 50% glycerol, 0.5% BSA and 0.02% sodium azide.
Storage	Store at -20°C. Avoid repeated freeze-thaw cycles.
Protein Name	Integrin alpha-2
Gene Name	ITGA2
Cellular localization	Membrane; Single-pass type I membrane protein.
Purification	The antibody was affinity-purified from rabbit antiserum by affinity-chromatography using epitope-specific immunogen.
Clonality	Polyclonal
Concentration	1 mg/ml
Observed band	130kD
Human Gene ID	3673
Human Swiss-Prot Number	P17301
Alternative Names	ITGA2; CD49B; Integrin alpha-2; CD49 antigen-like family member B; Collagen receptor; Platelet membrane glycoprotein Ia; GPIa; VLA-2 subunit alpha; CD49b
Background	integrin subunit alpha 2(ITGA2) Homo sapiens This gene encodes the alpha subunit of a transmembrane receptor for collagens and related proteins. The encoded protein forms a heterodimer

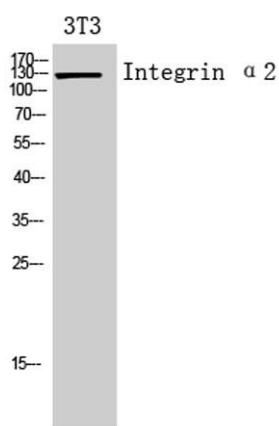




with a beta subunit and mediates the adhesion of platelets and other cell types to the extracellular matrix. Loss of the encoded protein is associated with bleeding disorder platelet-type 9. Antibodies against this protein are found in several immune disorders, including neonatal alloimmune thrombocytopenia. This gene is located adjacent to a related alpha subunit gene. Alternative splicing results in multiple transcript variants. [provided by RefSeq, Aug 2012],



Western Blot analysis of NIH-3T3 cells using Integrin  $\alpha 2$  Polyclonal Antibody. Secondary antibody(catalog#:RS0002) was diluted at 1:20000



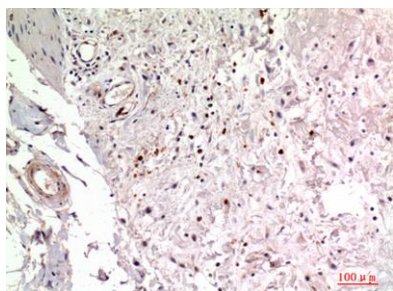
Western Blot analysis of 3T3 cells using Integrin  $\alpha 2$  Polyclonal Antibody. Secondary antibody(catalog#:RS0002) was diluted at 1:20000





**ELK Biotechnology**

Immunohistochemical analysis of paraffin-embedded human-colon, antibody was diluted at 1:100



+86-27-59760950

[ELKbio@ELKbiotech.com](mailto:ELKbio@ELKbiotech.com)

[www.elkbiotech.com](http://www.elkbiotech.com)

23-2, No.388 Gaoxin 2nd Road, Wuhan East Lake Hi-tech Development Zone, Hubei, P.R.C.