

SDHB rabbit pAb

Cat No.:ES4180

For research use only

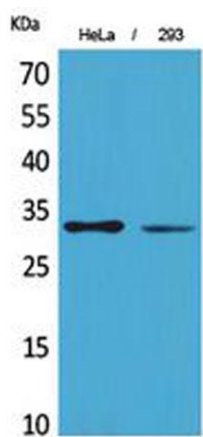
Overview

Product Name	SDHB rabbit pAb
Host species	Rabbit
Applications	WB;IHC;IF;ELISA
Species Cross-Reactivity	Human;Mouse;Rat;Fish
Recommended dilutions	Western Blot: 1/500 - 1/2000. IHC-p: 1/100-1/300. ELISA: 1/20000. Not yet tested in other applications.
Immunogen	The antiserum was produced against synthesized peptide derived from the Internal region of human SDHB. AA range:131-180
Specificity	SDHB Polyclonal Antibody detects endogenous levels of SDHB protein.
Formulation	Liquid in PBS containing 50% glycerol, 0.5% BSA and 0.02% sodium azide.
Storage	Store at -20°C. Avoid repeated freeze-thaw cycles.
Protein Name	Succinate dehydrogenase [ubiquinone] iron-sulfur subunit mitochondrial
Gene Name	SDHB
Cellular localization	Mitochondrion inner membrane; Peripheral membrane protein; Matrix side.
Purification	The antibody was affinity-purified from rabbit antiserum by affinity-chromatography using epitope-specific immunogen.
Clonality	Polyclonal
Concentration	1 mg/ml
Observed band	31kD
Human Gene ID	6390
Human Swiss-Prot Number	P21912
Alternative Names	SDHB; SDH; SDH1; Succinate dehydrogenase [ubiquinone] iron-sulfur subunit, mitochondrial; Iron-sulfur subunit of complex II; Ip
Background	Complex II of the respiratory chain, which is specifically involved in the oxidation of succinate, carries electrons from FADH to CoQ. The complex is

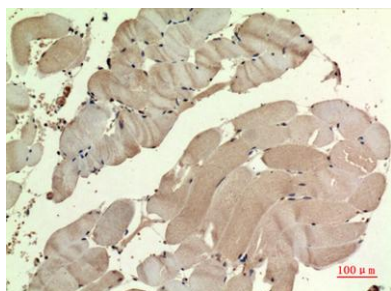




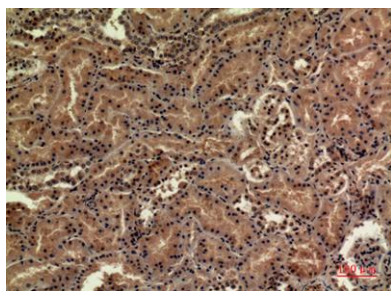
composed of four nuclear-encoded subunits and is localized in the mitochondrial inner membrane. The iron-sulfur subunit is highly conserved and contains three cysteine-rich clusters which may comprise the iron-sulfur centers of the enzyme. Sporadic and familial mutations in this gene result in paragangliomas and pheochromocytoma, and support a link between mitochondrial dysfunction and tumorigenesis. [provided by RefSeq, Jul 2008],



Western Blot analysis of HeLa, 293 cells using SDHB Polyclonal Antibody. Secondary antibody(catalog#:RS0002) was diluted at 1:20000



Immunohistochemical analysis of paraffin-embedded human-muscle, antibody was diluted at 1:100



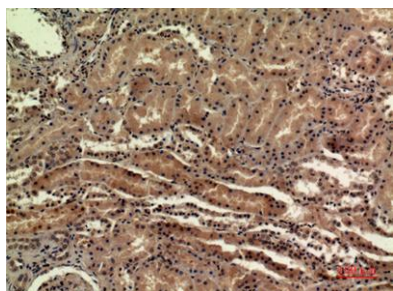
Immunohistochemical analysis of paraffin-embedded human-kidney, antibody was diluted at 1:100





ELK Biotechnology

Immunohistochemical analysis of paraffin-embedded human-kidney, antibody was diluted at 1:100



+86-27-59760950

ELKbio@ELKbiotech.com

www.elkbiotech.com

23-2, No.388 Gaoxin 2nd Road, Wuhan East Lake Hi-tech Development Zone, Hubei, P.R.C.