

Nov rabbit pAb

Cat No.:ES4142

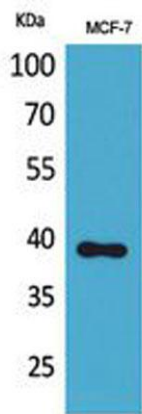
For research use only

Overview

Product Name	Nov rabbit pAb
Host species	Rabbit
Applications	WB;IHC;IF;ELISA
Species Cross-Reactivity	Human;Mouse
Recommended dilutions	Western Blot: 1/500 - 1/2000. IHC-p: 1/100-1/300. ELISA: 1/20000. Not yet tested in other applications.
Immunogen	The antiserum was produced against synthesized peptide derived from the Internal region of human NOV. AA range:221-270
Specificity	Nov Polyclonal Antibody detects endogenous levels of Nov protein.
Formulation	Liquid in PBS containing 50% glycerol, 0.5% BSA and 0.02% sodium azide.
Storage	Store at -20°C. Avoid repeated freeze-thaw cycles.
Protein Name	Protein NOV homolog
Gene Name	NOV
Cellular localization	Secreted. Cytoplasm . Cell junction, gap junction . Localizes at the gap junction in presence of GJA1. .
Purification	The antibody was affinity-purified from rabbit antiserum by affinity-chromatography using epitope-specific immunogen.
Clonality	Polyclonal
Concentration	1 mg/ml
Observed band	39kD
Human Gene ID	4856
Human Swiss-Prot Number	P48745
Alternative Names	NOV; CCN3; IGFBP9; NOVH; Protein NOV homolog; NovH; CCN family member 3; Insulin-like growth factor-binding protein 9; IBP-9; IGF-binding protein 9; IGFBP-9; Nephroblastoma-overexpressed gene protein homolog
Background	The protein encoded by this gene is a small secreted cysteine-rich protein and a member of the CCN

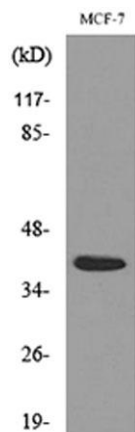
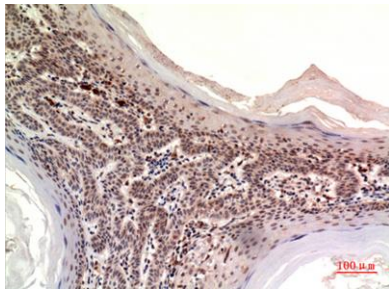


family of regulatory proteins. CNN family proteins associate with the extracellular matrix and play an important role in cardiovascular and skeletal development, fibrosis and cancer development. [provided by RefSeq, Feb 2009],



Western Blot analysis of MCF-7 cells using Nov Polyclonal Antibody. Secondary antibody(catalog#:RS0002) was diluted at 1:20000

Immunohistochemical analysis of paraffin-embedded human-skin, antibody was diluted at 1:100



Western blot analysis of lysate from MCF-7 cells, using NOV Antibody.

