

# NTE rabbit pAb

Cat No.:ES4093

For research use only

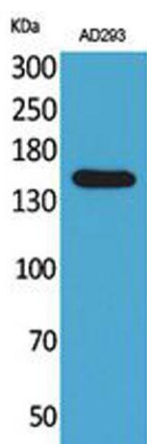
## Overview

Product Name	NTE rabbit pAb
Host species	Rabbit
Applications	WB;IHC;IF;ELISA
Species Cross-Reactivity	Human;Mouse;Rat
Recommended dilutions	Western Blot: 1/500 - 1/2000. IHC-p: 1/100-1/300. ELISA: 1/20000. Not yet tested in other applications.
Immunogen	The antiserum was produced against synthesized peptide derived from the Internal region of human PNPLA6. AA range:1031-1080
Specificity	NTE Polyclonal Antibody detects endogenous levels of NTE protein.
Formulation	Liquid in PBS containing 50% glycerol, 0.5% BSA and 0.02% sodium azide.
Storage	Store at -20°C. Avoid repeated freeze-thaw cycles.
Protein Name	Neuropathy target esterase
Gene Name	PNPLA6
Cellular localization	Endoplasmic reticulum membrane ; Single-pass type III membrane protein .
Purification	The antibody was affinity-purified from rabbit antiserum by affinity-chromatography using epitope-specific immunogen.
Clonality	Polyclonal
Concentration	1 mg/ml
Observed band	150kD
Human Gene ID	10908
Human Swiss-Prot Number	Q8IY17
Alternative Names	PNPLA6; NTE; Neuropathy target esterase; Patatin-like phospholipase domain-containing protein 6
Background	This gene encodes a phospholipase that deacetylates intracellular phosphatidylcholine to produce glycerophosphocholine. It is thought to function in neurite outgrowth and process

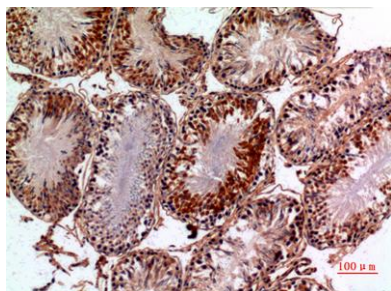




elongation during neuronal differentiation. The protein is anchored to the cytoplasmic face of the endoplasmic reticulum in both neurons and non-neuronal cells. Mutations in this gene result in autosomal recessive spastic paraplegia, and the protein is the target for neurodegeneration induced by organophosphorus compounds and chemical warfare agents. Multiple transcript variants encoding different isoforms have been found for this gene. [provided by RefSeq, Oct 2009],



Western Blot analysis of AD293 cells using NTE Polyclonal Antibody. Secondary antibody(catalog#:RS0002) was diluted at 1:20000



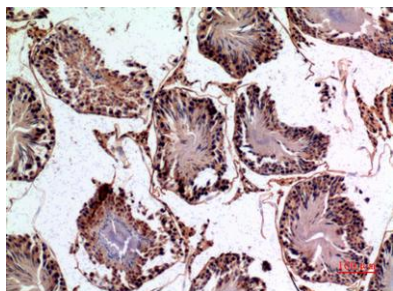
Immunohistochemical analysis of paraffin-embedded rat-testis, antibody was diluted at 1:100



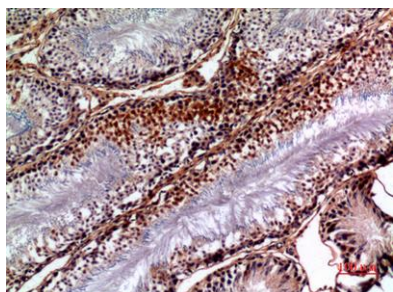


**ELK Biotechnology**

Immunohistochemical analysis of paraffin-embedded  
rat-testis, antibody was diluted at 1:100



Immunohistochemical analysis of paraffin-embedded  
rat-testis, antibody was diluted at 1:100



+86-27-59760950

[ELKbio@ELKbiotech.com](mailto:ELKbio@ELKbiotech.com)

[www.elkbiotech.com](http://www.elkbiotech.com)

23-2, No.388 Gaoxin 2nd Road, Wuhan East Lake Hi-tech Development Zone, Hubei, P.R.C.