

IGFBP6 rabbit pAb

Cat No.:ES4091

For research use only

Overview

Product Name	IGFBP6 rabbit pAb
Host species	Rabbit
Applications	WB;ELISA
Species Cross-Reactivity	Human;Rat;Mouse;
Recommended dilutions	Western Blot: 1/500 - 1/2000. ELISA: 1/20000. Not yet tested in other applications.
Immunogen	The antiserum was produced against synthesized peptide derived from the Internal region of human IGFBP6. AA range:101-150
Specificity	IGFBP6 Polyclonal Antibody detects endogenous levels of IGFBP6 protein.
Formulation	Liquid in PBS containing 50% glycerol, 0.5% BSA and 0.02% sodium azide.
Storage	Store at -20°C. Avoid repeated freeze-thaw cycles.
Protein Name	Insulin-like growth factor-binding protein 6
Gene Name	IGFBP6
Cellular localization	Secreted .
Purification	The antibody was affinity-purified from rabbit antiserum by affinity-chromatography using epitope-specific immunogen.
Clonality	Polyclonal
Concentration	1 mg/ml
Observed band	25kD
Human Gene ID	3489
Human Swiss-Prot Number	P24592
Alternative Names	IGFBP6; IBP6; Insulin-like growth factor-binding protein 6; IBP-6; IGF-binding protein 6; IGFBP-6
Background	function:IGF-binding proteins prolong the half-life of the IGFs and have been shown to either inhibit or stimulate the growth promoting effects of the IGFs on cell culture. They alter the interaction of IGFs with their cell surface receptors.,PTM:O-linked glycans consist of hexose (probably Gal),

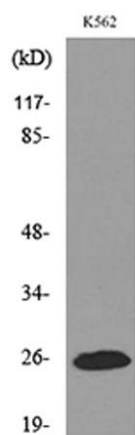




N-acetylhexosamine (probably GalNAc) and sialic acid residues. Major glycoforms consist of 8-16 monosaccharides (by homology to IGFBP6 expressed recombinantly in CHO cells).,similarity:Contains 1 IGFBP N-terminal domain.,similarity:Contains 1 thyroglobulin type-1 domain.,



Western Blot analysis of K562 cells using IGFBP6 Polyclonal Antibody. Secondary antibody(catalog#:RS0002) was diluted at 1:20000



Western blot analysis of lysate from K562 cells, using IGFBP6 Antibody.

