



VGF rabbit pAb

Cat No.:ES4026

For research use only

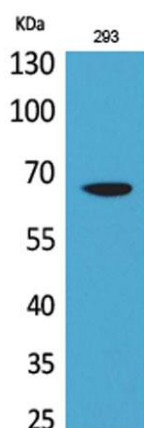
Overview

Product Name	VGF rabbit pAb
Host species	Rabbit
Applications	WB;IHC;IF;ELISA
Species Cross-Reactivity	Human;Mouse;Rat
Recommended dilutions	Western Blot: 1/500 - 1/2000. IHC-p: 1/100-1/300. ELISA: 1/20000. Not yet tested in other applications.
Immunogen	The antiserum was produced against synthesized peptide derived from the Internal region of human VGF. AA range:451-500
Specificity	VGF Polyclonal Antibody detects endogenous levels of VGF protein.
Formulation	Liquid in PBS containing 50% glycerol, 0.5% BSA and 0.02% sodium azide.
Storage	Store at -20°C. Avoid repeated freeze-thaw cycles.
Protein Name	Neurosecretory protein VGF
Gene Name	VGF
Cellular localization	[Neurosecretory protein VGF]: Secreted . Cytoplasmic vesicle, secretory vesicle . Stored in secretory vesicles and then secreted, NERP peptides colocalize with vasopressin in the storage granules of hypothalamus.
Purification	The antibody was affinity-purified from rabbit antiserum by affinity-chromatography using epitope-specific immunogen.
Clonality	Polyclonal
Concentration	1 mg/ml
Observed band	67kD
Human Gene ID	7425
Human Swiss-Prot Number	O15240
Alternative Names	VGF; Neurosecretory protein VGF
Background	This gene is specifically expressed in a subpopulation of neuroendocrine cells, and is upregulated by nerve growth factor. The structural

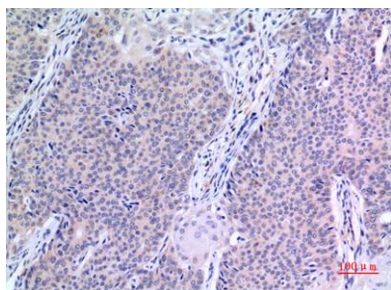




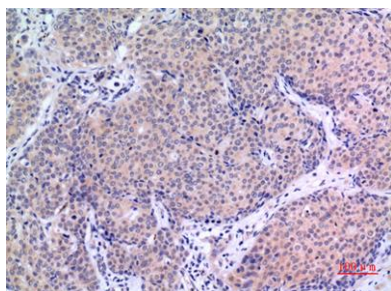
organization of this gene is similar to that of the rat gene, and both the translated and the untranslated regions show a high degree of sequence similarity to the rat gene. The encoded secretory protein also shares similarities with the secretogranin/chromogranin family, however, its exact function is not known. [provided by RefSeq, Jul 2008],



Western Blot analysis of 293 cells using VGF Polyclonal Antibody. Secondary antibody(catalog#:RS0002) was diluted at 1:20000



Immunohistochemical analysis of paraffin-embedded human-mammary-cancer, antibody was diluted at 1:100



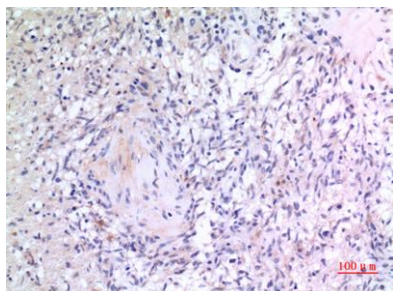
Immunohistochemical analysis of paraffin-embedded human-mammary-cancer, antibody was diluted at 1:100





ELK Biotechnology

Immunohistochemical analysis of paraffin-embedded human-brain, antibody was diluted at 1:100



+86-27-59760950

ELKbio@ELKbiotech.com

www.elkbiotech.com

23-2, No.388 Gaoxin 2nd Road, Wuhan East Lake Hi-tech Development Zone, Hubei, P.R.C.