

CD248 rabbit pAb

Cat No.:ES3997

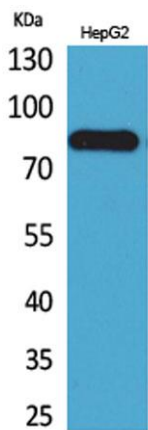
For research use only

Overview

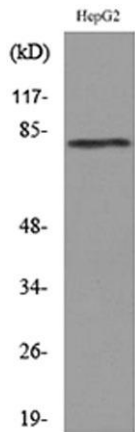
Product Name	CD248 rabbit pAb
Host species	Rabbit
Applications	WB;ELISA
Species Cross-Reactivity	Human;Rat;Mouse;
Recommended dilutions	Western Blot: 1/500 - 1/2000. ELISA: 1/20000. Not yet tested in other applications.
Immunogen	The antiserum was produced against synthesized peptide derived from the Internal region of human CD248. AA range:341-390
Specificity	CD248 Polyclonal Antibody detects endogenous levels of CD248 protein.
Formulation	Liquid in PBS containing 50% glycerol, 0.5% BSA and 0.02% sodium azide.
Storage	Store at -20°C. Avoid repeated freeze-thaw cycles.
Protein Name	Endosialin
Gene Name	CD248
Cellular localization	Membrane ; Single-pass type I membrane protein .
Purification	The antibody was affinity-purified from rabbit antiserum by affinity-chromatography using epitope-specific immunogen.
Clonality	Polyclonal
Concentration	1 mg/ml
Observed band	80kD
Human Gene ID	57124
Human Swiss-Prot Number	Q9HCU0
Alternative Names	CD248; CD164L1; TEM1; Endosialin; Tumor endothelial marker 1; CD248
Background	function:May play a role in tumor angiogenesis.,online information:Endosialin,PTM:May be N-glycosylated.,PTM:O-glycosylated with sialylated oligosaccharides.,similarity:Contains 1 C-type lectin domain.,similarity:Contains 1 EGF-like



domain.,similarity:Contains 1 Sushi (CCP/SCR)
domain.,tissue specificity:Expressed in tumor
endothelial cells but absent or barely detectable in
normal endothelial cells. Expressed in metastatic
lesions of the liver and during angiogenesis of
corpus luteum formation and wound healing.
Expressed in vascular endothelial cells of malignant
tumors but not in normal blood vessels. Expressed
in stromal fibroblasts.,



Western Blot analysis of HepG2 cells using CD248
Polyclonal Antibody. Secondary
antibody(catalog#:RS0002) was diluted at 1:20000



Western blot analysis of lysate from HepG2 cells, using
CD248 Antibody.