

# CD85g rabbit pAb

Cat No.:ES3988

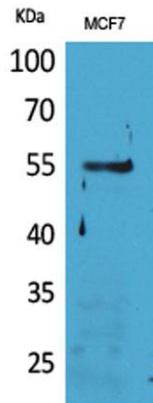
For research use only

## Overview

|                          |  |
|--------------------------|--|
| Product Name             | CD85g rabbit pAb   |
| Host species             | Rabbit   |
| Applications             | WB;IHC;IF;ELISA  |
| Species Cross-Reactivity | Human;Rat;Mouse;   |
| Recommended dilutions    | Western Blot: 1/500 - 1/2000. IHC-p: 1:100-300<br>ELISA: 1/20000. Not yet tested in other applications.  |
| Immunogen                | The antiserum was produced against synthesized peptide derived from the Internal region of human LILRA4. AA range:391-440                                    |
| Specificity              | CD85g Polyclonal Antibody detects endogenous levels of CD85g protein.  |
| Formulation              | Liquid in PBS containing 50% glycerol, 0.5% BSA and 0.02% sodium azide.  |
| Storage                  | Store at -20°C. Avoid repeated freeze-thaw cycles.   |
| Protein Name             | Leukocyte immunoglobulin-like receptor subfamily A member 4  |
| Gene Name                | LILRA4   |
| Cellular localization    | Cell membrane ; Single-pass type I membrane protein .  |
| Purification             | The antibody was affinity-purified from rabbit antiserum by affinity-chromatography using epitope-specific immunogen.  |
| Clonality                | Polyclonal   |
| Concentration            | 1 mg/ml  |
| Observed band            | 55kD   |
| Human Gene ID            | 23547  |
| Human Swiss-Prot Number  | P59901   |
| Alternative Names        | LILRA4; ILT7; Leukocyte immunoglobulin-like receptor subfamily A member 4; CD85 antigen-like family member G; Immunoglobulin-like transcript 7; ILT-7; CD85g |
| Background               | This gene encodes an immunoglobulin-like cell surface protein that is expressed predominantly on   |

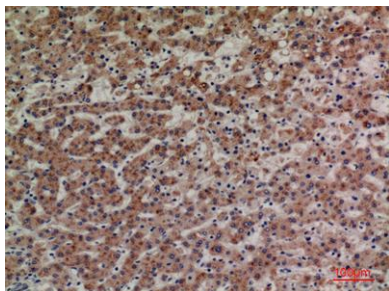


plasmacytoid dendritic cells (PDCs) and modulates the function of these cells in the immune response. Expression of this gene is downregulated by interleukin 3 (IL3). This gene is one of a cluster of highly related genes located at chromosomal region 19q13.4. [provided by RefSeq, Jan 2015],

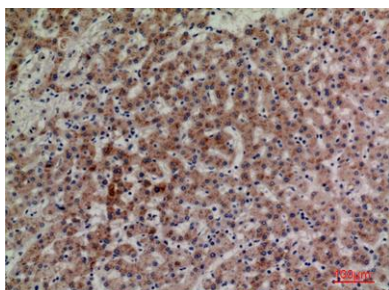


Western Blot analysis of MCF7 cells using CD85g Polyclonal Antibody. Secondary antibody(catalog#:RS0002) was diluted at 1:20000

Immunohistochemical analysis of paraffin-embedded human-liver, antibody was diluted at 1:100

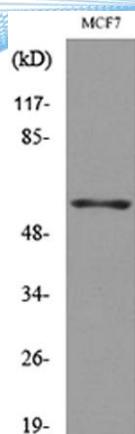


Immunohistochemical analysis of paraffin-embedded human-liver, antibody was diluted at 1:100





**ELK Biotechnology**



Western blot analysis of lysate from MCF7 cells, using LILRA4 Antibody.



+86-27-59760950

ELKbio@ELKbiotech.com

[www.elkbiotech.com](http://www.elkbiotech.com)

23-2, No.388 Gaoxin 2nd Road,Wuhan East Lake Hi-tech Development Zone, Hubei , P.R.C