

# CD28 rabbit pAb

Cat No.:ES3974

For research use only

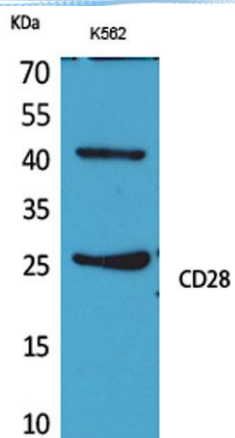
## Overview

Product Name	CD28 rabbit pAb
Host species	Rabbit
Applications	WB;ELISA
Species Cross-Reactivity	Human;Rat;Mouse;
Recommended dilutions	Western Blot: 1/500 - 1/2000. ELISA: 1/20000. Not yet tested in other applications.
Immunogen	Synthesized peptide derived from T-cell-specific surface glycoprotein CD28 at AA range: 11-60
Specificity	CD28 Polyclonal Antibody detects endogenous levels of CD28 protein.
Formulation	Liquid in PBS containing 50% glycerol, 0.5% BSA and 0.02% sodium azide.
Storage	Store at -20°C. Avoid repeated freeze-thaw cycles.
Protein Name	T-cell-specific surface glycoprotein CD28
Gene Name	CD28
Cellular localization	Membrane; Single-pass type I membrane protein.; [Isoform 3]: Cell surface .
Purification	The antibody was affinity-purified from rabbit antiserum by affinity-chromatography using epitope-specific immunogen.
Clonality	Polyclonal
Concentration	1 mg/ml
Observed band	25kD
Human Gene ID	940
Human Swiss-Prot Number	P10747
Alternative Names	CD28; T-cell-specific surface glycoprotein CD28; TP44; CD28
Background	The protein encoded by this gene is essential for T-cell proliferation and survival, cytokine production, and T-helper type-2 development. Several alternatively spliced transcript variants encoding different isoforms have been found for this gene.[provided by RefSeq, Jul 2011],





**ELK Biotechnology**



Western Blot analysis of K562 cells using CD28 Polyclonal Antibody. Secondary antibody(catalog#:RS0002) was diluted at 1:20000



+86-27-59760950

ELKbio@ELKbiotech.com

[www.elkbiotech.com](http://www.elkbiotech.com)

23-2, No.388 Gaoxin 2nd Road,Wuhan East Lake Hi-tech Development Zone, Hubei , P.R.C