

TFPI rabbit pAb

Cat No.:ES3965

For research use only

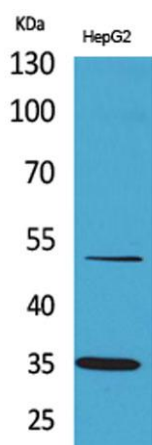
Overview

Product Name	TFPI rabbit pAb
Host species	Rabbit
Applications	WB;ELISA
Species Cross-Reactivity	Human;Rat;Mouse;
Recommended dilutions	Western Blot: 1/500 - 1/2000. ELISA: 1/20000. Not yet tested in other applications.
Immunogen	The antiserum was produced against synthesized peptide derived from the C-terminal region of human TFPI. AA range:251-300
Specificity	TFPI Polyclonal Antibody detects endogenous levels of TFPI protein.
Formulation	Liquid in PBS containing 50% glycerol, 0.5% BSA and 0.02% sodium azide.
Storage	Store at -20°C. Avoid repeated freeze-thaw cycles.
Protein Name	Tissue factor pathway inhibitor
Gene Name	TFPI
Cellular localization	[Isoform Alpha]: Secreted.; [Isoform Beta]: Microsome membrane ; Lipid-anchor, GPI-anchor .
Purification	The antibody was affinity-purified from rabbit antiserum by affinity-chromatography using epitope-specific immunogen.
Clonality	Polyclonal
Concentration	1 mg/ml
Observed band	34kD
Human Gene ID	7035
Human Swiss-Prot Number	P10646
Alternative Names	TFPI; LACI; TFPI1; Tissue factor pathway inhibitor; TFPI; Extrinsic pathway inhibitor; EPI; Lipoprotein-associated coagulation inhibitor; LACI
Background	This gene encodes a Kunitz-type serine protease inhibitor that regulates the tissue factor (TF)-dependent pathway of blood coagulation. The coagulation process initiates with the formation of a





factor VIIa-TF complex, which proteolytically activates additional proteases (factors IX and X) and ultimately leads to the formation of a fibrin clot. The product of this gene inhibits the activated factor X and VIIa-TF proteases in an autoregulatory loop. Inhibition of the encoded protein restores hemostasis in animal models of hemophilia. This gene encodes multiple protein isoforms that differ in their inhibitory activity, specificity and cellular localization. [provided by RefSeq, Jul 2016],



Western Blot analysis of HepG2 cells using TFPI Polyclonal Antibody. Secondary antibody(catalog#:RS0002) was diluted at 1:20000

