

FGF-18 rabbit pAb

Cat No.:ES3911

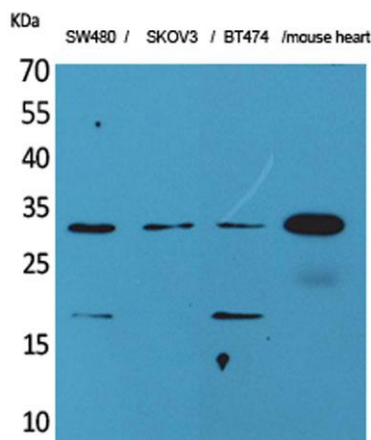
For research use only

Overview

Product Name	FGF-18 rabbit pAb
Host species	Rabbit
Applications	WB;IHC;IF;ELISA
Species Cross-Reactivity	Human;Mouse;Rat
Recommended dilutions	Western Blot: 1/500 - 1/2000. IHC-p: 1:100-300 ELISA: 1/20000. Not yet tested in other applications.
Immunogen	The antiserum was produced against synthesized peptide derived from the C-terminal region of human FGF18. AA range:158-207
Specificity	FGF-18 Polyclonal Antibody detects endogenous levels of FGF-18 protein.
Formulation	Liquid in PBS containing 50% glycerol, 0.5% BSA and 0.02% sodium azide.
Storage	Store at -20°C. Avoid repeated freeze-thaw cycles.
Protein Name	Fibroblast growth factor 18
Gene Name	FGF18
Cellular localization	Secreted .
Purification	The antibody was affinity-purified from rabbit antiserum by affinity-chromatography using epitope-specific immunogen.
Clonality	Polyclonal
Concentration	1 mg/ml
Observed band	28kD
Human Gene ID	8817
Human Swiss-Prot Number	O76093
Alternative Names	FGF18; Fibroblast growth factor 18; FGF-18; zFGF5
Background	The protein encoded by this gene is a member of the fibroblast growth factor (FGF) family. FGF family members possess broad mitogenic and cell survival activities, and are involved in a variety of biological processes, including embryonic development, cell growth, morphogenesis, tissue repair, tumor growth, and invasion. It has been shown in vitro that

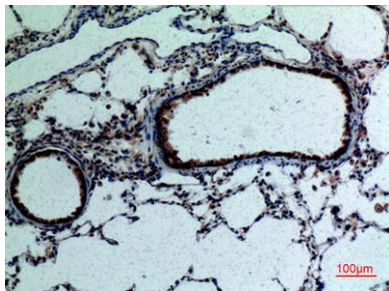


this protein is able to induce neurite outgrowth in PC12 cells. Studies of the similar proteins in mouse and chick suggested that this protein is a pleiotropic growth factor that stimulates proliferation in a number of tissues, most notably the liver and small intestine. Knockout studies of the similar gene in mice implied the role of this protein in regulating proliferation and differentiation of midline cerebellar structures. [provided by RefSeq, Jul 2008],



Western Blot analysis of SW480, SKOV3, BT474, mouse heart cells using FGF-18 Polyclonal Antibody. Secondary antibody(catalog#:RS0002) was diluted at 1:20000 cells nucleus extracted by Minute TM Cytoplasmic and Nuclear Fractionation kit (SC-003, Inventbiote

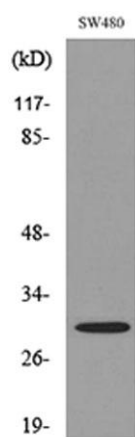
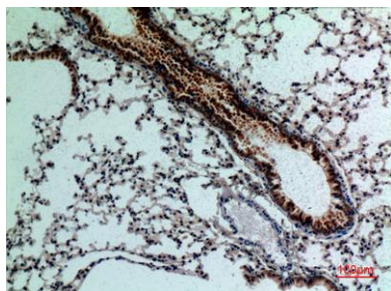
Immunohistochemical analysis of paraffin-embedded rat-lung, antibody was diluted at 1:100





ELK Biotechnology

Immunohistochemical analysis of paraffin-embedded mouse-lung, antibody was diluted at 1:100



Western blot analysis of lysate from SW480 cells, using FGF18 Antibody.



+86-27-59760950

ELKbio@ELKbiotech.com

www.elkbiotech.com

23-2, No.388 Gaoxin 2nd Road, Wuhan East Lake Hi-tech Development Zone, Hubei, P.R.C.