

# Lamin B1 rabbit pAb

Cat No.:ES3910

For research use only

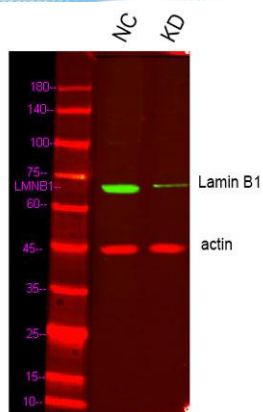
## Overview

Product Name	Lamin B1 rabbit pAb
Host species	Rabbit
Applications	WB;IHC;IF;ELISA
Species Cross-Reactivity	Human;Mouse;Rat
Recommended dilutions	Western Blot: 1/500 - 1/2000. IHC-p: 1:100-300 ELISA: 1/20000. Not yet tested in other applications.
Immunogen	The antiserum was produced against synthesized peptide derived from the Internal region of human LMNB1. AA range:391-440
Specificity	Lamin B1 Polyclonal Antibody detects endogenous levels of Lamin B1 protein.
Formulation	Liquid in PBS containing 50% glycerol, 0.5% BSA and 0.02% sodium azide.
Storage	Store at -20°C. Avoid repeated freeze-thaw cycles.
Protein Name	Lamin-B1
Gene Name	LMNB1
Cellular localization	Nucleus lamina .
Purification	The antibody was affinity-purified from rabbit antiserum by affinity-chromatography using epitope-specific immunogen.
Clonality	Polyclonal
Concentration	1 mg/ml
Observed band	70kD
Human Gene ID	4001
Human Swiss-Prot Number	P20700
Alternative Names	LMNB1; LMN2; LMNB; Lamin-B1
Background	lamin B1(LMNB1) Homo sapiens This gene encodes one of the two B-type lamin proteins and is a component of the nuclear lamina. A duplication of this gene is associated with autosomal dominant adult-onset leukodystrophy (ADLD). Alternative splicing results in multiple transcript variants. [provided by RefSeq, Dec 2015],





ELK Biotechnology



Western blot analysis of lysates from 1)Hela cell , 2)Hela cells knockdown by siRNA  
(F:GCUUCUUGAUGUAAAGUUATT,R:UAACUUUACAUCAAG AAGCTT), (Green) primary antibody was diluted at 1:1000, 4°over night, Dylight 800 secondary antibody(Immunoway:RS23920)was dilut



+86-27-59760950

ELKbio@ELKbiotech.com

[www.elkbiotech.com](http://www.elkbiotech.com)

23-2, No.388 Gaoxin 2nd Road,Wuhan East Lake Hi-tech Development Zone, Hubei , P.R.C