

# FGF-20 rabbit pAb

Cat No.:ES3908

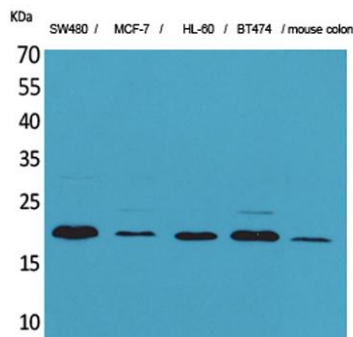
For research use only

## Overview

|                          |   |
|--------------------------|---|
| Product Name             | FGF-20 rabbit pAb   |
| Host species             | Rabbit  |
| Applications             | WB;IHC;IF;ELISA   |
| Species Cross-Reactivity | Human;Mouse;Rat   |
| Recommended dilutions    | Western Blot: 1/500 - 1/2000. IHC-p: 1:100-300<br>ELISA: 1/20000. Not yet tested in other applications.   |
| Immunogen                | The antiserum was produced against synthesized peptide derived from the Internal region of human FGF20. AA range:151-200  |
| Specificity              | FGF-20 Polyclonal Antibody detects endogenous levels of FGF-20 protein.   |
| Formulation              | Liquid in PBS containing 50% glycerol, 0.5% BSA and 0.02% sodium azide.   |
| Storage                  | Store at -20°C. Avoid repeated freeze-thaw cycles.  |
| Protein Name             | Fibroblast growth factor 20   |
| Gene Name                | FGF20   |
| Cellular localization    | Secreted .  |
| Purification             | The antibody was affinity-purified from rabbit antiserum by affinity-chromatography using epitope-specific immunogen.   |
| Clonality                | Polyclonal  |
| Concentration            | 1 mg/ml   |
| Observed band            | 23kD  |
| Human Gene ID            | 26281   |
| Human Swiss-Prot Number  | Q9NP95  |
| Alternative Names        | FGF20; Fibroblast growth factor 20; FGF-20  |
| Background               | The protein encoded by this gene is a member of the fibroblast growth factor family. The fibroblast growth factors possess broad mitogenic and cell survival activities, and are involved in a variety of biological processes including embryonic development, cell growth, morphogenesis, tissue repair, tumor growth and invasion. This gene |

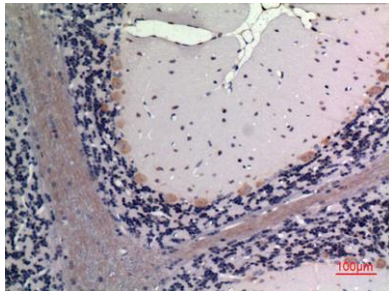


product is a secreted neurotrophic factor but lacks a typical signal peptide. It is expressed in normal brain, particularly the cerebellum, and may regulate central nervous system development and function. Homodimerization of this protein was shown to regulate its receptor binding activity and concentration gradient in the extracellular matrix. Genetic variations of this gene have been associated with Parkinson disease susceptibility. [provided by RefSeq, Oct 2009],



Western Blot analysis of SW480, MCF-7, HL-60, BT474, mouse colon cells using FGF-20 Polyclonal Antibody. Secondary antibody(catalog#:RS0002) was diluted at 1:20000

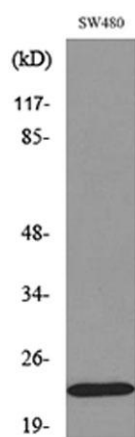
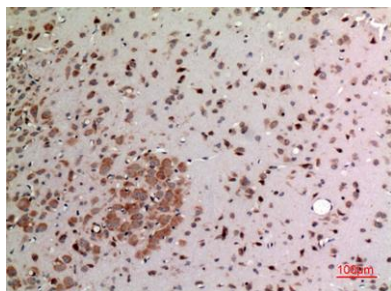
Immunohistochemical analysis of paraffin-embedded rat-brain, antibody was diluted at 1:100





**ELK Biotechnology**

Immunohistochemical analysis of paraffin-embedded rat-brain, antibody was diluted at 1:100



Western blot analysis of lysate from SW480 cells, using FGF20 Antibody.



+86-27-59760950

[ELKbio@ELKbiotech.com](mailto:ELKbio@ELKbiotech.com)

[www.elkbiotech.com](http://www.elkbiotech.com)

23-2, No.388 Gaoxin 2nd Road, Wuhan East Lake Hi-tech Development Zone, Hubei, P.R.C.