

Amylase rabbit pAb

Cat No.:ES3894

For research use only

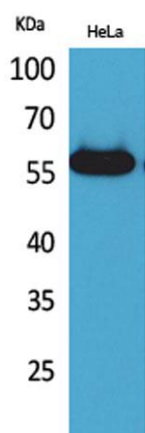
Overview

Product Name	Amylase rabbit pAb
Host species	Rabbit
Applications	WB;IHC;IF;ELISA
Species Cross-Reactivity	Human;Mouse;Rat
Recommended dilutions	Western Blot: 1/500 - 1/2000. IHC-p: 1:100-300 ELISA: 1/20000. Not yet tested in other applications.
Immunogen	The antiserum was produced against synthesized peptide derived from the N-terminal region of human AMY1/2. AA range:61-110
Specificity	Amylase Polyclonal Antibody detects endogenous levels of Amylase protein.
Formulation	Liquid in PBS containing 50% glycerol, 0.5% BSA and 0.02% sodium azide.
Storage	Store at -20°C. Avoid repeated freeze-thaw cycles.
Protein Name	Alpha-amylase 1/Pancreatic alpha-amylase/Alpha-amylase 2B
Gene Name	AMY1A/AMY1B/AMY1C/AMY2A/AMY2B
Cellular localization	extracellular space,extracellular exosome,
Purification	The antibody was affinity-purified from rabbit antiserum by affinity-chromatography using epitope-specific immunogen.
Clonality	Polyclonal
Concentration	1 mg/ml
Observed band	60kD
Human Gene ID	276
Human Swiss-Prot Number	P04745
Alternative Names	AMY1A; AMY1; AMY1B; AMY1; AMY1C; AMY1; Alpha-amylase 1; 1,4-alpha-D-glucan glucanohydrolase 1; Salivary alpha-amylase; AMY2A; Pancreatic alpha-amylase; PA;1,4-alpha-D-glucan glucanohydrolase; AMY2B; Alpha-amylase 2B; 1,4-alpha-D-glucan glucanohydrolase 2B
Background	Amylases are secreted proteins that hydrolyze

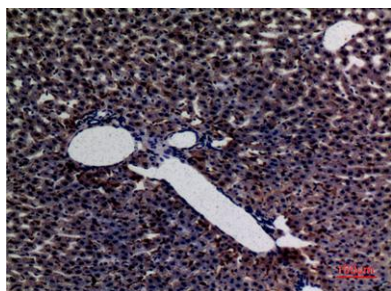




1,4-alpha-glucoside bonds in oligosaccharides and polysaccharides, and thus catalyze the first step in digestion of dietary starch and glycogen. The human genome has a cluster of several amylase genes that are expressed at high levels in either salivary gland or pancreas. This gene encodes an amylase isoenzyme produced by the salivary gland. Alternative splicing results in multiple transcript variants encoding the same protein. [provided by RefSeq, Jul 2008],



Western Blot analysis of HeLa cells using Amylase Polyclonal Antibody. Secondary antibody(catalog#:RS0002) was diluted at 1:20000



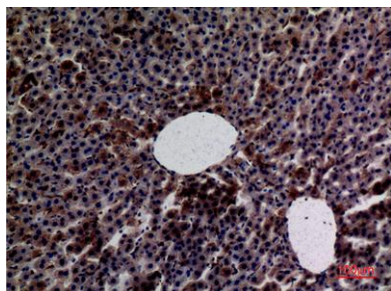
Immunohistochemical analysis of paraffin-embedded rat-liver, antibody was diluted at 1:100



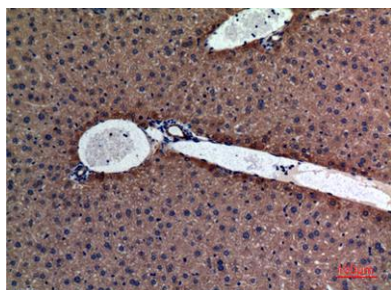


ELK Biotechnology

Immunohistochemical analysis of paraffin-embedded
rat-liver, antibody was diluted at 1:100



Immunohistochemical analysis of paraffin-embedded
mouse-liver, antibody was diluted at 1:100



+86-27-59760950

ELKbio@ELKbiotech.com

www.elkbiotech.com

23-2, No.388 Gaoxin 2nd Road, Wuhan East Lake Hi-tech Development Zone, Hubei, P.R.C.