

# PKC $\gamma$ rabbit pAb

Cat No.:ES3878

For research use only

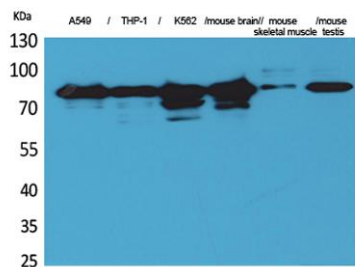
## Overview

Product Name	PKC $\gamma$ rabbit pAb
Host species	Rabbit
Applications	WB;IHC;IF;ELISA
Species Cross-Reactivity	Human;Mouse;Rat
Recommended dilutions	Western Blot: 1/500 - 1/2000. IHC-p: 1:100-300 ELISA: 1/20000. Not yet tested in other applications.
Immunogen	The antiserum was produced against synthesized peptide derived from the Internal region of human PRKCG. AA range:521-570
Specificity	PKC $\gamma$ Polyclonal Antibody detects endogenous levels of PKC $\gamma$ protein.
Formulation	Liquid in PBS containing 50% glycerol, 0.5% BSA and 0.02% sodium azide.
Storage	Store at -20°C. Avoid repeated freeze-thaw cycles.
Protein Name	Protein kinase C gamma type
Gene Name	PRKCG
Cellular localization	Cytoplasm . Cytoplasm, perinuclear region . Cell membrane ; Peripheral membrane protein . Cell junction, synapse, synaptosome . Cell projection, dendrite . Translocates to synaptic membranes on stimulation. .
Purification	The antibody was affinity-purified from rabbit antiserum by affinity-chromatography using epitope-specific immunogen.
Clonality	Polyclonal
Concentration	1 mg/ml
Observed band	78kD
Human Gene ID	5582
Human Swiss-Prot Number	P05129
Alternative Names	PRKCG; PKCG; Protein kinase C gamma type; PKC-gamma
Background	Protein kinase C (PKC) is a family of serine- and threonine-specific protein kinases that can be



activated by calcium and second messenger diacylglycerol. PKC family members phosphorylate a wide variety of protein targets and are known to be involved in diverse cellular signaling pathways. PKC also serve as major receptors for phorbol esters, a class of tumor promoters. Each member of the PKC family has a specific expression profile and is believed to play distinct roles in cells. The protein encoded by this gene is one of the PKC family members. This protein kinase is expressed solely in the brain and spinal cord and its localization is restricted to neurons. It has been demonstrated that several neuronal functions, including long term potentiation (LTP) and long term depression (LTD), specifically require this kinase. Knockout studies in mice also suggest that this kinase may be involved in neurop

Western Blot analysis of A549, THP-1, K562, mouse brain, mouse skeletal muscle, mouse testis cells using PKC  $\gamma$  Polyclonal Antibody. Secondary antibody(catalog#:RS0002) was diluted at 1:20000

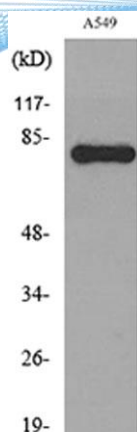


Immunohistochemical analysis of paraffin-embedded rat-brain, antibody was diluted at 1:100





**ELK Biotechnology**



Western blot analysis of lysate from A549 cells, using PRKCG Antibody.



+86-27-59760950

ELKbio@ELKbiotech.com

[www.elkbiotech.com](http://www.elkbiotech.com)

23-2, No.388 Gaoxin 2nd Road,Wuhan East Lake Hi-tech Development Zone, Hubei , P.R.C