

Latexin rabbit pAb

Cat No.:ES3864

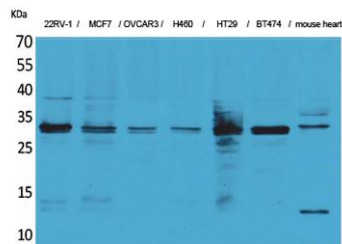
For research use only

Overview

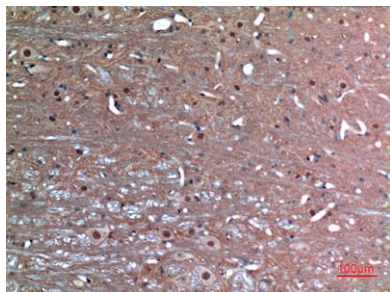
Product Name	Latexin rabbit pAb
Host species	Rabbit
Applications	WB;IHC;IF;ELISA
Species Cross-Reactivity	Human;Mouse;Rat
Recommended dilutions	Western Blot: 1/500 - 1/2000. IHC-p: 1:100-300 ELISA: 1/20000. Not yet tested in other applications.
Immunogen	Synthesized peptide derived from Latexin . at AA range: 90-170
Specificity	Latexin Polyclonal Antibody detects endogenous levels of Latexin protein.
Formulation	Liquid in PBS containing 50% glycerol, 0.5% BSA and 0.02% sodium azide.
Storage	Store at -20°C. Avoid repeated freeze-thaw cycles.
Protein Name	Latexin
Gene Name	LXN
Cellular localization	Cytoplasm .
Purification	The antibody was affinity-purified from rabbit antiserum by affinity-chromatography using epitope-specific immunogen.
Clonality	Polyclonal
Concentration	1 mg/ml
Observed band	25kD
Human Gene ID	56925
Human Swiss-Prot Number	Q9BS40
Alternative Names	LXN; Latexin; Endogenous carboxypeptidase inhibitor; ECI; Protein MUM; Tissue carboxypeptidase inhibitor; TCI
Background	This gene encodes the only known protein inhibitor of zinc-dependent metallopeptidases. [provided by RefSeq, Oct 2008],



Western Blot analysis of 22RV-1, MCF7, OVCAR3, H460, HT29, BT474, mouse heart cells using Latexin Polyclonal Antibody. Secondary antibody(catalog#:RS0002) was diluted at 1:20000



Immunohistochemical analysis of paraffin-embedded rat-brain, antibody was diluted at 1:100



Immunohistochemical analysis of paraffin-embedded rat-brain, antibody was diluted at 1:100

