

TREM-1 rabbit pAb

Cat No.:ES3863

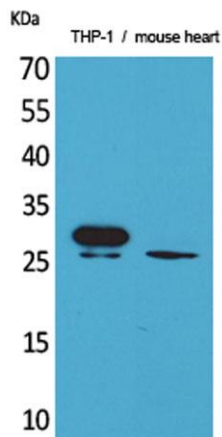
For research use only

Overview

Product Name	TREM-1 rabbit pAb
Host species	Rabbit
Applications	WB;IHC;IF;ELISA
Species Cross-Reactivity	Human;Rat;Mouse;
Recommended dilutions	WB 1:500-2000;IHC-p 1:100-500;IF/ICC 1:100-500;ELISA 1:5000-20000
Immunogen	Synthesized peptide derived from TREM-1 . at AA range: 40-120
Specificity	TREM-1 Polyclonal Antibody detects endogenous levels of TREM-1 protein.
Formulation	Liquid in PBS containing 50% glycerol, 0.5% BSA and 0.02% sodium azide.
Storage	Store at -20°C. Avoid repeated freeze-thaw cycles.
Protein Name	Triggering receptor expressed on myeloid cells 1
Gene Name	TREM1
Cellular localization	[Isoform 1]: Cell membrane ; Single-pass type I membrane protein . Recruited to lipid rafts when activated. . ; [Isoform 2]: Secreted .
Purification	The antibody was affinity-purified from rabbit antiserum by affinity-chromatography using epitope-specific immunogen.
Clonality	Polyclonal
Concentration	1 mg/ml
Observed band	26kD
Human Gene ID	54210
Human Swiss-Prot Number	Q9NP99
Alternative Names	TREM1; Triggering receptor expressed on myeloid cells 1; TREM-1; Triggering receptor expressed on monocytes 1; CD354
Background	triggering receptor expressed on myeloid cells 1(TREM1) Homo sapiens This gene encodes a receptor belonging to the Ig superfamily that is expressed on myeloid cells. This protein amplifies



neutrophil and monocyte-mediated inflammatory responses triggered by bacterial and fungal infections by stimulating release of pro-inflammatory chemokines and cytokines, as well as increased surface expression of cell activation markers. Alternatively spliced transcript variants encoding different isoforms have been noted for this gene.[provided by RefSeq, Jun 2011],



Western Blot analysis of THP-1, mouse heart cells using TREM-1 Polyclonal Antibody. Secondary antibody(catalog#:RS0002) was diluted at 1:20000



Immunohistochemical analysis of paraffin-embedded human brain, antibody was diluted at 1:100

