

TRP14 rabbit pAb

Cat No.:ES3861

For research use only

Overview

Product Name	TRP14 rabbit pAb
Host species	Rabbit
Applications	WB;ELISA
Species Cross-Reactivity	Human;Rat;Mouse;
Recommended dilutions	Western Blot: 1/500 - 1/2000. ELISA: 1/20000. Not yet tested in other applications.
Immunogen	Synthesized peptide derived from TRP14 . at AA range: 20-100
Specificity	TRP14 Polyclonal Antibody detects endogenous levels of TRP14 protein.
Formulation	Liquid in PBS containing 50% glycerol, 0.5% BSA and 0.02% sodium azide.
Storage	Store at -20°C. Avoid repeated freeze-thaw cycles.
Protein Name	Thioredoxin domain-containing protein 17
Gene Name	TXNDC17
Cellular localization	Cytoplasm .
Purification	The antibody was affinity-purified from rabbit antiserum by affinity-chromatography using epitope-specific immunogen.
Clonality	Polyclonal
Concentration	1 mg/ml
Observed band	13kD
Human Gene ID	84817
Human Swiss-Prot Number	Q9BRA2
Alternative Names	TXNDC17; TXNL5; Thioredoxin domain-containing protein 17; 14 kDa thioredoxin-related protein; TRP14; Protein 42-9-9; Thioredoxin-like protein 5 function:Disulfide reductase. May participate in various redox reactions through the reversible oxidation of its active center dithiol to a disulfide and catalyze dithiol-disulfide exchange reactions. Modulates TNF-alpha signaling and NF-kappa-B activation. Has peroxidase activity and may
Background	

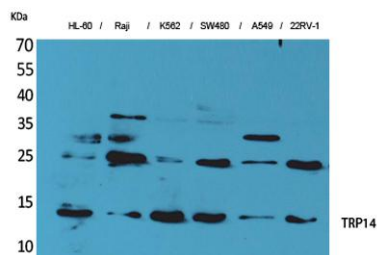




ELK Biotechnology

contribute to the elimination of cellular hydrogen peroxide.,PTM:The oxidized protein is reduced by TRXR1.,similarity:Belongs to the thioredoxin family.,similarity:Contains 1 thioredoxin domain.,subunit:Interacts with TRXR1 and DYNLL1/DNCL1.,tissue specificity:Ubiquitously expressed in cell lines.,

Western Blot analysis of HL-60, Raji, K562, SW480, A549, 22RV-1 cells using TRP14 Polyclonal Antibody. Secondary antibody(catalog#:RS0002) was diluted at 1:20000



+86-27-59760950

ELKbio@ELKbiotech.com

www.elkbiotech.com

23-2, No.388 Gaoxin 2nd Road,Wuhan East Lake Hi-tech Development Zone, Hubei , P.R.C