

Contactin 1 rabbit pAb

Cat No.:ES3852

For research use only

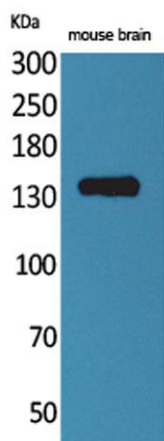
Overview

Product Name	Contactin 1 rabbit pAb
Host species	Rabbit
Applications	WB;ELISA
Species Cross-Reactivity	Human;Mouse;Rat
Recommended dilutions	Western Blot: 1/500 - 1/2000. ELISA: 1/20000. Not yet tested in other applications.
Immunogen	Synthesized peptide derived from the N-terminal region of human Contactin 1.
Specificity	Contactin 1 Polyclonal Antibody detects endogenous levels of Contactin 1 protein.
Formulation	Liquid in PBS containing 50% glycerol, 0.5% BSA and 0.02% sodium azide.
Storage	Store at -20°C. Avoid repeated freeze-thaw cycles.
Protein Name	Contactin-1
Gene Name	CNTN1
Cellular localization	[Isoform 1]: Cell membrane; Lipid-anchor, GPI-anchor; Extracellular side.; [Isoform 2]: Cell membrane; Lipid-anchor, GPI-anchor; Extracellular side.
Purification	The antibody was affinity-purified from rabbit antiserum by affinity-chromatography using epitope-specific immunogen.
Clonality	Polyclonal
Concentration	1 mg/ml
Observed band	113kD
Human Gene ID	1272
Human Swiss-Prot Number	Q12860
Alternative Names	CNTN1; Contactin-1; Glycoprotein gp135; Neural cell surface protein F3
Background	The protein encoded by this gene is a member of the immunoglobulin superfamily. It is a glycosylphosphatidylinositol (GPI)-anchored neuronal membrane protein that functions as a cell





adhesion molecule. It may play a role in the formation of axon connections in the developing nervous system. Multiple alternatively spliced transcript variants encoding different isoforms have been found for this gene. [provided by RefSeq, Dec 2011],



Western Blot analysis of mouse brain cells using Contactin 1 Polyclonal Antibody. Secondary antibody(catalog#:RS0002) was diluted at 1:20000

