



RRP7A rabbit pAb

Cat No.:ES3843

For research use only

Overview

Product Name	RRP7A rabbit pAb
Host species	Rabbit
Applications	WB;IHC;IF;ELISA
Species Cross-Reactivity	Human;Mouse;Rat
Recommended dilutions	Western Blot: 1/500 - 1/2000. IHC-p: 1:100-300 ELISA: 1/20000. Not yet tested in other applications.
Immunogen	Synthesized peptide derived from the C-terminal region of human RRP7A.
Specificity	RRP7A Polyclonal Antibody detects endogenous levels of RRP7A protein.
Formulation	Liquid in PBS containing 50% glycerol, 0.5% BSA and 0.02% sodium azide.
Storage	Store at -20°C. Avoid repeated freeze-thaw cycles.
Protein Name	Ribosomal RNA-processing protein 7 homolog A/B
Gene Name	RRP7A
Cellular localization	Nucleus, nucleolus . Cell projection, cilium . Cytoplasm, cytoskeleton, microtubule organizing center, centrosome .
Purification	The antibody was affinity-purified from rabbit antiserum by affinity-chromatography using epitope-specific immunogen.
Clonality	Polyclonal
Concentration	1 mg/ml
Observed band	32kD
Human Gene ID	27341
Human Swiss-Prot Number	Q9Y3A4
Alternative Names	RRP7A; CGI-96; Ribosomal RNA-processing protein 7 homolog A; Gastric cancer antigen Zg14; RRP7B; Putative ribosomal RNA-processing protein 7 homolog B; Putative gastric cancer antigen Zg14-like protein
Background	caution:Could be the product of a pseudogene.,similarity:Belongs to the RRP7

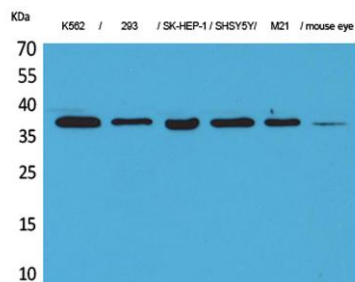




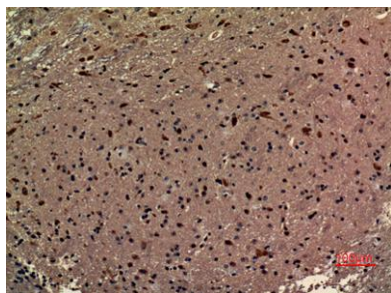
ELK Biotechnology

family.,similarity:Contains 1 RRM (RNA recognition motif) domain.,

Western Blot analysis of K562, 293, SK-HEP-1, SHSY5Y, M21, mouse eye cells using RRP7A Polyclonal Antibody. Secondary antibody(catalog#:RS0002) was diluted at 1:20000



Immunohistochemical analysis of paraffin-embedded mouse-brain, antibody was diluted at 1:100



+86-27-59760950

ELKbio@ELKbiotech.com

www.elkbiotech.com

23-2, No.388 Gaoxin 2nd Road,Wuhan East Lake Hi-tech Development Zone, Hubei , P.R.C