

IL-31R α rabbit pAb

Cat No.:ES3821

For research use only

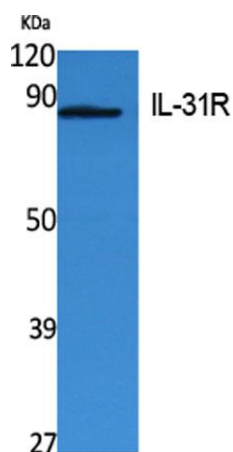
Overview

Product Name	IL-31R α rabbit pAb
Host species	Rabbit
Applications	WB;ELISA
Species Cross-Reactivity	Human;Rat;Mouse;
Recommended dilutions	Western Blot: 1/500 - 1/2000. ELISA: 1/40000. Not yet tested in other applications.
Immunogen	Synthesized peptide derived from the Internal region of human IL-31R α .
Specificity	IL-31R α Polyclonal Antibody detects endogenous levels of IL-31R α protein.
Formulation	Liquid in PBS containing 50% glycerol, 0.5% BSA and 0.02% sodium azide.
Storage	Store at -20°C. Avoid repeated freeze-thaw cycles.
Protein Name	Interleukin-31 receptor subunit alpha
Gene Name	IL31RA
Cellular localization	Cell membrane ; Single-pass type I membrane protein . Cell junction, synapse, presynaptic cell membrane . Cell projection, axon .
Purification	The antibody was affinity-purified from rabbit antiserum by affinity-chromatography using epitope-specific immunogen.
Clonality	Polyclonal
Concentration	1 mg/ml
Observed band	82kD
Human Gene ID	133396
Human Swiss-Prot Number	Q8NI17
Alternative Names	IL31RA; CRL3; GPL; Interleukin-31 receptor subunit alpha; IL-31 receptor subunit alpha; IL-31R subunit alpha; IL-31R-alpha; IL-31RA; Cytokine receptor-like 3; GLM-R; hGLM-R; Gp130-like monocyte receptor; Gp130-like receptor; ZcytoR17
Background	The protein encoded by this gene belongs to the type I cytokine receptor family. This receptor, with





homology to gp130, is expressed on monocytes, and is involved in IL-31 signaling via activation of STAT-3 and STAT-5. It functions either as a monomer, or as part of a receptor complex with oncostatin M receptor (OSMR). Several alternatively spliced transcript variants encoding different isoforms have been noted for this gene.[provided by RefSeq, Jun 2011],



Western Blot analysis of extracts from Jurkat cells, using IL-31R Polyclonal Antibody. Secondary antibody(catalog#:RS0002) was diluted at 1:20000

