

UBE4A rabbit pAb

Cat No.:ES3810

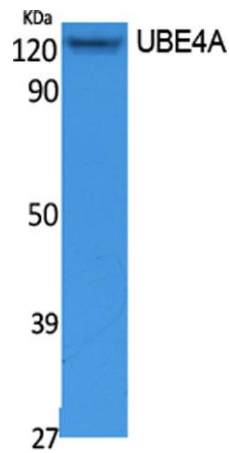
For research use only

Overview

Product Name	UBE4A rabbit pAb
Host species	Rabbit
Applications	WB;IHC;IF;ELISA
Species Cross-Reactivity	Human;Mouse;Rat
Recommended dilutions	Western Blot: 1/500 - 1/2000. IHC-p: 1:100-300 ELISA: 1/10000. Not yet tested in other applications.
Immunogen	Synthesized peptide derived from the N-terminal region of human UBE4A.
Specificity	UBE4A Polyclonal Antibody detects endogenous levels of UBE4A protein.
Formulation	Liquid in PBS containing 50% glycerol, 0.5% BSA and 0.02% sodium azide.
Storage	Store at -20°C. Avoid repeated freeze-thaw cycles.
Protein Name	Ubiquitin conjugation factor E4 A
Gene Name	UBE4A
Cellular localization	Cytoplasm .
Purification	The antibody was affinity-purified from rabbit antiserum by affinity-chromatography using epitope-specific immunogen.
Clonality	Polyclonal
Concentration	1 mg/ml
Observed band	122kD
Human Gene ID	9354
Human Swiss-Prot Number	Q14139
Alternative Names	UBE4A; KIAA0126; Ubiquitin conjugation factor E4 A
Background	This gene encodes a member of the U-box ubiquitin ligase family. The encoded protein is involved in multiubiquitin chain assembly and plays a critical role in chromosome condensation and separation through the polyubiquitination of securin. Autoantibodies against the encoded protein may be markers for scleroderma and Crohn's disease. A pseudogene of this gene is located on the long arm

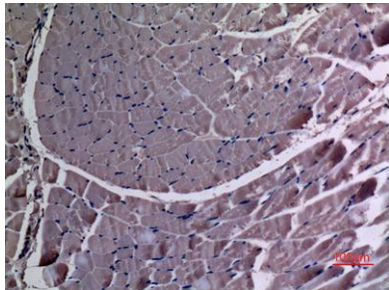


of chromosome 3. Alternatively spliced transcript variants encoding multiple isoforms have been observed for this gene. [provided by RefSeq, Feb 2011],

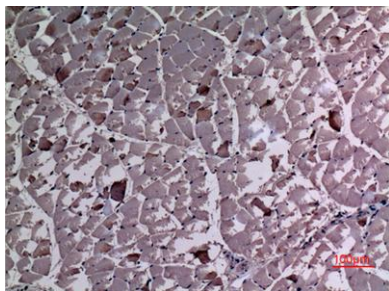


Western Blot analysis of extracts from Jurkat cells, using UBE4A Polyclonal Antibody. Secondary antibody(catalog#:RS0002) was diluted at 1:20000

Immunohistochemical analysis of paraffin-embedded rat-muscle, antibody was diluted at 1:100



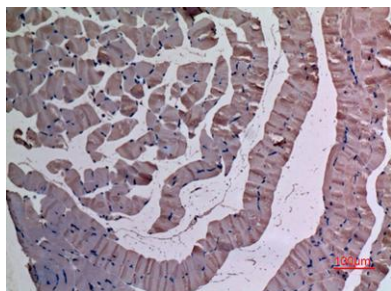
Immunohistochemical analysis of paraffin-embedded rat-muscle, antibody was diluted at 1:100





ELK Biotechnology

Immunohistochemical analysis of paraffin-embedded mouse-muscle, antibody was diluted at 1:100



+86-27-59760950

ELKbio@ELKbiotech.com

www.elkbiotech.com

23-2, No.388 Gaoxin 2nd Road,Wuhan East Lake Hi-tech Development Zone, Hubei , P.R.C