

Myosin VI rabbit pAb

Cat No.:ES3802

For research use only

Overview

Product Name	Myosin VI rabbit pAb
Host species	Rabbit
Applications	WB;IHC;IF;ELISA
Species Cross-Reactivity	Human;Mouse;Rat
Recommended dilutions	Western Blot: 1/500 - 1/2000. IHC-p: 1:100-300 ELISA: 1/5000. Not yet tested in other applications.
Immunogen	Synthesized peptide derived from Myosin VI . at AA range: 40-120
Specificity	Myosin VI Polyclonal Antibody detects endogenous levels of Myosin VI protein.
Formulation	Liquid in PBS containing 50% glycerol, 0.5% BSA and 0.02% sodium azide.
Storage	Store at -20°C. Avoid repeated freeze-thaw cycles.
Protein Name	Unconventional myosin-VI
Gene Name	MYO6
Cellular localization	Golgi apparatus, trans-Golgi network membrane ; Peripheral membrane protein . Golgi apparatus . Nucleus . Cytoplasm, perinuclear region . Membrane, clathrin-coated pit . Cytoplasmic vesicle, clathrin-coated vesicle . Cell projection, filopodium . Cell projection, ruffle membrane . Cell projection, microvillus . Cytoplasm, cytosol . Also present in endocytic vesicles (PubMed:16507995). Translocates from membrane ruffles, endocytic vesicles and cytoplasm to Golgi apparatus, perinuclear membrane and nucleus through induction by p53 and p53-induced DNA damage (PubMed:16507995). Recruited into membrane ruffles from cell surface by EGF-stimulation (PubMed:9852149). Colocalizes with DAB2 in clathrin-coated pits/vesicles (PubMed:11967127). Colocalizes with OPTN at the Golgi complex and in vesicul





Purification

The antibody was affinity-purified from rabbit antiserum by affinity-chromatography using epitope-specific immunogen.

Clonality

Polyclonal

Concentration

1 mg/ml

Observed band

149kD

Human Gene ID

4646

Human Swiss-Prot Number

Q9UM54

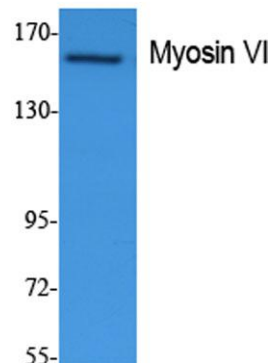
Alternative Names

MYO6; KIAA0389; Unconventional myosin-VI; Unconventional myosin-6

Background

myosin VI(MYO6) Homo sapiens This gene encodes a reverse-direction motor protein that moves toward the minus end of actin filaments and plays a role in intracellular vesicle and organelle transport. The protein consists of a motor domain containing an ATP- and an actin-binding site and a globular tail which interacts with other proteins. This protein maintains the structural integrity of inner ear hair cells and mutations in this gene cause non-syndromic autosomal dominant and recessive hearing loss. Alternative splicing results in multiple transcript variants encoding distinct isoforms. [provided by RefSeq, Jul 2014],

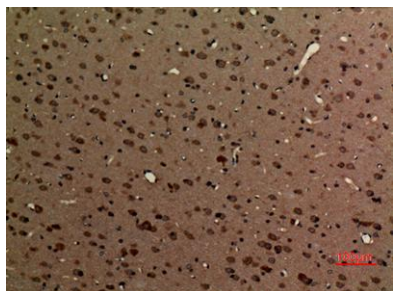
(kD)



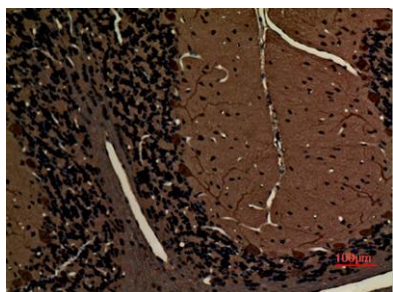
Western Blot analysis of extracts from Jurkat cells, using Myosin VI Polyclonal Antibody. Secondary antibody(catalog#:RS0002) was diluted at 1:20000



Immunohistochemical analysis of paraffin-embedded
rat-brain, antibody was diluted at 1:100



Immunohistochemical analysis of paraffin-embedded
rat-brain, antibody was diluted at 1:100



Immunohistochemical analysis of paraffin-embedded
rat-brain, antibody was diluted at 1:100

