

BOCT rabbit pAb

Cat No.:ES3792

For research use only

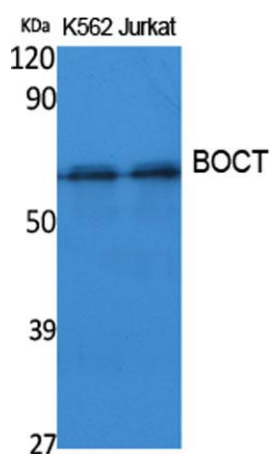
Overview

Product Name	BOCT rabbit pAb
Host species	Rabbit
Applications	WB;IHC;IF;ELISA
Species Cross-Reactivity	Human;Mouse;Rat
Recommended dilutions	Western Blot: 1/500 - 1/2000. IHC-p: 1:100-300 ELISA: 1/5000. Not yet tested in other applications.
Immunogen	Synthesized peptide derived from the Internal region of human BOCT.
Specificity	BOCT Polyclonal Antibody detects endogenous levels of BOCT protein.
Formulation	Liquid in PBS containing 50% glycerol, 0.5% BSA and 0.02% sodium azide.
Storage	Store at -20°C. Avoid repeated freeze-thaw cycles.
Protein Name	Solute carrier family 22 member 17
Gene Name	SLC22A17
Cellular localization	Cell membrane ; Multi-pass membrane protein . Vacuole membrane ; Multi-pass membrane protein . Upon LCN2-binding, it is internalized.
Purification	The antibody was affinity-purified from rabbit antiserum by affinity-chromatography using epitope-specific immunogen.
Clonality	Polyclonal
Concentration	1 mg/ml
Observed band	57kD
Human Gene ID	51310
Human Swiss-Prot Number	Q8WUG5
Alternative Names	SLC22A17; BOCT; BOIT; Solute carrier family 22 member 17; 24p3 receptor; 24p3R; Brain-type organic cation transporter; Lipocalin-2 receptor; Neutrophil gelatinase-associated lipocalin receptor; NgaiR
Background	similarity:Belongs to the major facilitator superfamily. Organic cation transporter family.,tissue



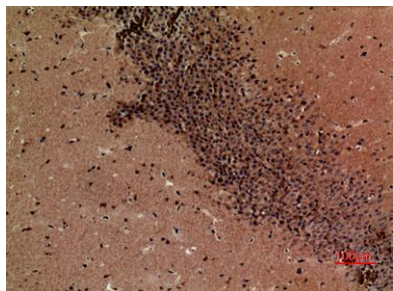


specificity: Expressed in brain.,



Western Blot analysis of extracts from K562, Jurkat cells, using BOCT Polyclonal Antibody. Secondary antibody(catalog#:RS0002) was diluted at 1:20000

Immunohistochemical analysis of paraffin-embedded mouse-brain, antibody was diluted at 1:100



Immunohistochemical analysis of paraffin-embedded mouse-brain, antibody was diluted at 1:100

