

M6A rabbit pAb

Cat No.:ES3774

For research use only

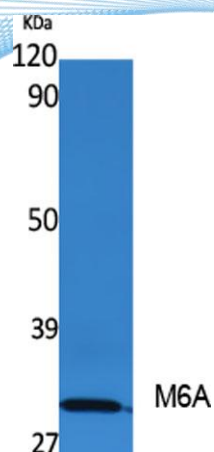
Overview

| | |
|--------------------------|--|
| Product Name | M6A rabbit pAb |
| Host species | Rabbit |
| Applications | WB;ELISA |
| Species Cross-Reactivity | Human;Mouse;Rat |
| Recommended dilutions | Western Blot: 1/500 - 1/2000. ELISA: 1/5000. Not yet tested in other applications. |
| Immunogen | Synthesized peptide derived from M6A . at AA range: 140-220 |
| Specificity | M6A Polyclonal Antibody detects endogenous levels of M6A protein. |
| Formulation | Liquid in PBS containing 50% glycerol, 0.5% BSA and 0.02% sodium azide. |
| Storage | Store at -20°C. Avoid repeated freeze-thaw cycles. |
| Protein Name | Neuronal membrane glycoprotein M6-a |
| Gene Name | GPM6A |
| Cellular localization | Cell membrane ; Multi-pass membrane protein . Cell projection, axon . Cell projection, growth cone . Cell projection, dendritic spine . Cell projection, filopodium . Cell projection, neuron projection . Localizes to cholesterol-rich lipid rafts of the plasma membrane. |
| Purification | The antibody was affinity-purified from rabbit antiserum by affinity-chromatography using epitope-specific immunogen. |
| Clonality | Polyclonal |
| Concentration | 1 mg/ml |
| Observed band | 31kD |
| Human Gene ID | 2823 |
| Human Swiss-Prot Number | P51674 |
| Alternative Names | GPM6A; M6A; Neuronal membrane glycoprotein M6-a; M6a |
| Background | similarity:Belongs to the myelin proteolipid protein family, |





ELK Biotechnology



Western Blot analysis of extracts from rat stomach, using M6A Polyclonal Antibody. Secondary antibody(catalog#:RS0002) was diluted at 1:20000



+86-27-59760950

ELKbio@ELKbiotech.com

www.elkbiotech.com

23-2, No.388 Gaoxin 2nd Road,Wuhan East Lake Hi-tech Development Zone, Hubei , P.R.C