



Aladin rabbit pAb

Cat No.:ES3772

For research use only

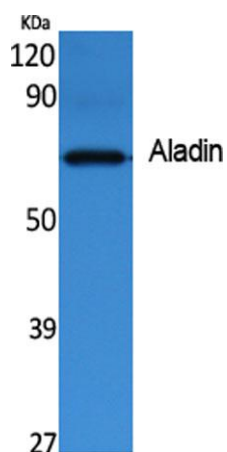
Overview

Product Name	Aladin rabbit pAb
Host species	Rabbit
Applications	WB;ELISA
Species Cross-Reactivity	Human;Rat
Recommended dilutions	Western Blot: 1/500 - 1/2000. ELISA: 1/40000. Not yet tested in other applications.
Immunogen	Synthesized peptide derived from Aladin . at AA range: 360-440
Specificity	Aladin Polyclonal Antibody detects endogenous levels of Aladin protein.
Formulation	Liquid in PBS containing 50% glycerol, 0.5% BSA and 0.02% sodium azide.
Storage	Store at -20°C. Avoid repeated freeze-thaw cycles.
Protein Name	Aladin
Gene Name	AAAS
Cellular localization	Nucleus, nuclear pore complex . Cytoplasm, cytoskeleton, spindle pole . Nucleus envelope . In metaphase cells localizes within the spindle with some accumulation around spindle poles, with the highest concentration between the centrosome and metaphase pla
Purification	The antibody was affinity-purified from rabbit antiserum by affinity-chromatography using epitope-specific immunogen.
Clonality	Polyclonal
Concentration	1 mg/ml
Observed band	59kD
Human Gene ID	8086
Human Swiss-Prot Number	Q9NRG9
Alternative Names	AAAS; ADRACALA; GL003; Aladin; Adracalin
Background	The protein encoded by this gene is a member of the WD-repeat family of regulatory proteins and may be involved in normal development of the





peripheral and central nervous system. The encoded protein is part of the nuclear pore complex and is anchored there by NDC1. Defects in this gene are a cause of achalasia-addisonianism-alacrima syndrome (AAAS), also called triple-A syndrome or Allgrove syndrome. Two transcript variants encoding different isoforms have been found for this gene. [provided by RefSeq, Mar 2010],



Western Blot analysis of extracts from rat kidney, using Aladin Polyclonal Antibody. Secondary antibody(catalog#:RS0002) was diluted at 1:20000 cells nucleus extracted by Minute TM Cytoplasmic and Nuclear Fractionation kit (SC-003, Inventbiotech, MN, USA).

