

Gl Syn rabbit pAb

Cat No.:ES3765

For research use only

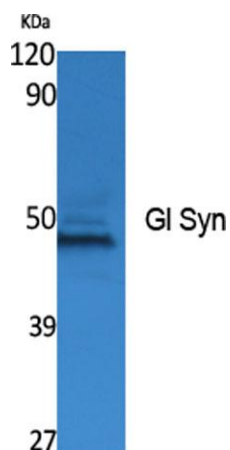
Overview

Product Name	Gl Syn rabbit pAb
Host species	Rabbit
Applications	WB;ELISA
Species Cross-Reactivity	Human;Mouse;Rat
Recommended dilutions	Western Blot: 1/500 - 1/2000. ELISA: 1/20000. Not yet tested in other applications.
Immunogen	The antiserum was produced against synthesized peptide derived from human Gl Syn. AA range:295-344
Specificity	Gl Syn Polyclonal Antibody detects endogenous levels of Gl Syn protein.
Formulation	Liquid in PBS containing 50% glycerol, 0.5% BSA and 0.02% sodium azide.
Storage	Store at -20°C. Avoid repeated freeze-thaw cycles.
Protein Name	Glutamine synthetase
Gene Name	GLUL
Cellular localization	Cytoplasm, cytosol . Microsome . Mitochondrion . Cell membrane ; Lipid-anchor . Mainly localizes in the cytosol, with a fraction associated with the cell membrane. .
Purification	The antibody was affinity-purified from rabbit antiserum by affinity-chromatography using epitope-specific immunogen.
Clonality	Polyclonal
Concentration	1 mg/ml
Observed band	42kD
Human Gene ID	2752
Human Swiss-Prot Number	P15104
Alternative Names	GLUL; GLNS; Glutamine synthetase; GS; Glutamate decarboxylase; Glutamate--ammonia ligase
Background	The protein encoded by this gene belongs to the glutamine synthetase family. It catalyzes the synthesis of glutamine from glutamate and

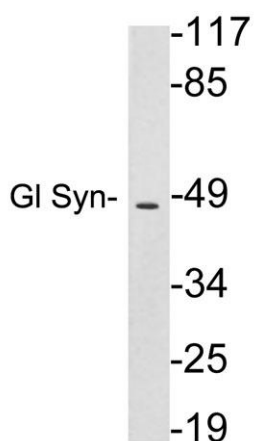




ammonia in an ATP-dependent reaction. This protein plays a role in ammonia and glutamate detoxification, acid-base homeostasis, cell signaling, and cell proliferation. Glutamine is an abundant amino acid, and is important to the biosynthesis of several amino acids, pyrimidines, and purines. Mutations in this gene are associated with congenital glutamine deficiency, and overexpression of this gene was observed in some primary liver cancer samples. There are six pseudogenes of this gene found on chromosomes 2, 5, 9, 11, and 12. Alternative splicing results in multiple transcript variants. [provided by RefSeq, Dec 2014],



Western Blot analysis of extracts from K562 cells, using Gl Syn Polyclonal Antibody. Secondary antibody(catalog#:RS0002) was diluted at 1:20000



Western blot analysis of lysates from HepG2 cells , using Gl Syn antibody.

