

ENT1 rabbit pAb

Cat No.:ES3761

For research use only

Overview

Product Name	ENT1 rabbit pAb
Host species	Rabbit
Applications	WB;ELISA
Species Cross-Reactivity	Human;Mouse;Rat
Recommended dilutions	Western Blot: 1/500 - 1/2000. ELISA: 1/20000. Not yet tested in other applications.
Immunogen	The antiserum was produced against synthesized peptide derived from human ENT1. AA range:15-64
Specificity	ENT1 Polyclonal Antibody detects endogenous levels of ENT1 protein.
Formulation	Liquid in PBS containing 50% glycerol, 0.5% BSA and 0.02% sodium azide.
Storage	Store at -20°C. Avoid repeated freeze-thaw cycles.
Protein Name	Equilibrative nucleoside transporter 1
Gene Name	SLC29A1
Cellular localization	Basolateral cell membrane; Multi-pass membrane protein. Apical cell membrane; Multi-pass membrane protein. Cell membrane; Multi-pass membrane protein. Predominantly localized in the basolateral membrane in polarized MDCK cells.
Purification	The antibody was affinity-purified from rabbit antiserum by affinity-chromatography using epitope-specific immunogen.
Clonality	Polyclonal
Concentration	1 mg/ml
Observed band	55kD
Human Gene ID	2030
Human Swiss-Prot Number	Q99808
Alternative Names	SLC29A1; ENT1; Equilibrative nucleoside transporter 1; Equilibrative nitrobenzylmercaptapurine riboside-sensitive nucleoside transporter;Equilibrative NBMPR-sensitive nucleoside transporter; Nucleoside transporter,

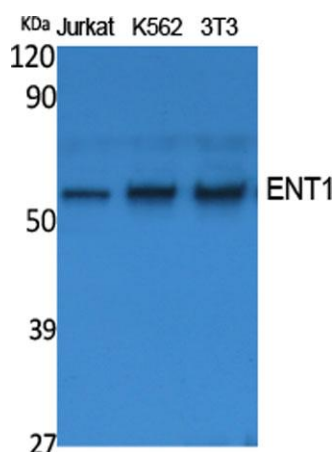




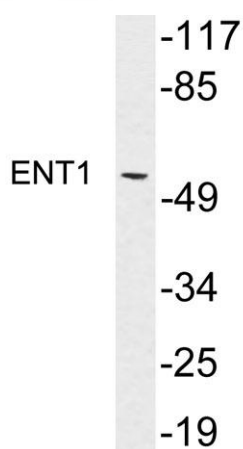
Background

es-type; Solute carrier family 29 member

This gene is a member of the equilibrative nucleoside transporter family. The gene encodes a transmembrane glycoprotein that localizes to the plasma and mitochondrial membranes and mediates the cellular uptake of nucleosides from the surrounding medium. The protein is categorized as an equilibrative (as opposed to concentrative) transporter that is sensitive to inhibition by nitrobenzylthioinosine (NBMPR). Nucleoside transporters are required for nucleotide synthesis in cells that lack de novo nucleoside synthesis pathways, and are also necessary for the uptake of cytotoxic nucleosides used for cancer and viral chemotherapies. Multiple alternatively spliced variants, encoding the same protein, have been found for this gene. [provided by RefSeq, Jul 2008],



Western Blot analysis of extracts from Jurkat, K562, NIH-3T3 cells, using ENT1 Polyclonal Antibody. Antibody was diluted at 1:2000. Secondary antibody(catalog#:RS0002) was diluted at 1:20000



Western blot analysis of lysates from MDA-MB-435 cells, using ENT1 antibody.

