

Elmo1 rabbit pAb

Cat No.:ES3760

For research use only

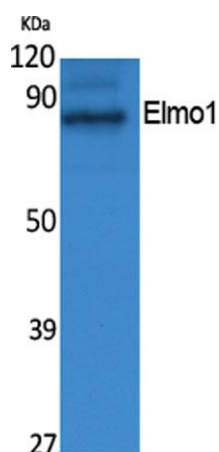
Overview

Product Name	Elmo1 rabbit pAb
Host species	Rabbit
Applications	WB;ELISA
Species Cross-Reactivity	Human;Mouse
Recommended dilutions	Western Blot: 1/500 - 1/2000. ELISA: 1/20000. Not yet tested in other applications.
Immunogen	The antiserum was produced against synthesized peptide derived from human Elmo1. AA range:22-71
Specificity	Elmo1 Polyclonal Antibody detects endogenous levels of Elmo1 protein.
Formulation	Liquid in PBS containing 50% glycerol, 0.5% BSA and 0.02% sodium azide.
Storage	Store at -20°C. Avoid repeated freeze-thaw cycles.
Protein Name	Engulfment and cell motility protein 1
Gene Name	ELMO1
Cellular localization	Cytoplasm. Cell membrane. Translocation to plasma membrane seems to be mediated by DOCK1 and CRK.
Purification	The antibody was affinity-purified from rabbit antiserum by affinity-chromatography using epitope-specific immunogen.
Clonality	Polyclonal
Concentration	1 mg/ml
Observed band	83kD
Human Gene ID	9844
Human Swiss-Prot Number	Q92556
Alternative Names	ELMO1; KIAA0281; Engulfment and cell motility protein 1; Protein ced-12 homolog
Background	This gene encodes a member of the engulfment and cell motility protein family. These proteins interact with dedicator of cytokinesis proteins to promote phagocytosis and cell migration. Increased expression of this gene and dedicator of cytokinesis

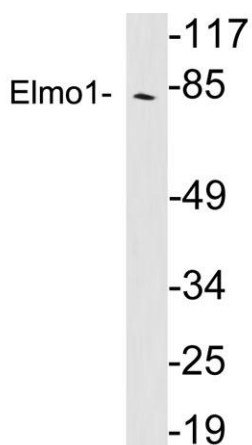




1 may promote glioma cell invasion, and single nucleotide polymorphisms in this gene may be associated with diabetic nephropathy. Alternative splicing results in multiple transcript variants. [provided by RefSeq, Aug 2013],



Western Blot analysis of extracts from NIH-3T3 cells, using Elmo1 Polyclonal Antibody. Secondary antibody(catalog#:RS0002) was diluted at 1:20000



Western blot analysis of lysates from Jurkat cells, using Elmo1 antibody.

