

β -1,3-Gal-TL rabbit pAb

Cat No.:ES3749

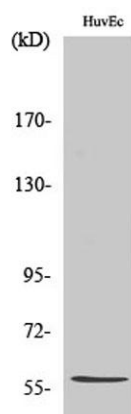
For research use only

Overview

Product Name	β -1,3-Gal-TL rabbit pAb
Host species	Rabbit
Applications	WB;IHC;IF;ELISA
Species Cross-Reactivity	Human;Rat;Mouse;
Recommended dilutions	Western Blot: 1/500 - 1/2000. Immunohistochemistry: 1/100 - 1/300. ELISA: 1/40000. Not yet tested in other applications.
Immunogen	The antiserum was produced against synthesized peptide derived from human B3GALT. AA range:449-498
Specificity	β -1,3-Gal-TL Polyclonal Antibody detects endogenous levels of β -1,3-Gal-TL protein.
Formulation	Liquid in PBS containing 50% glycerol, 0.5% BSA and 0.02% sodium azide.
Storage	Store at -20°C. Avoid repeated freeze-thaw cycles.
Protein Name	Beta-1,3-glucosyltransferase
Gene Name	B3GALT
Cellular localization	Endoplasmic reticulum membrane ; Single-pass type II membrane protein .
Purification	The antibody was affinity-purified from rabbit antiserum by affinity-chromatography using epitope-specific immunogen.
Clonality	Polyclonal
Concentration	1 mg/ml
Observed band	57kD
Human Gene ID	145173
Human Swiss-Prot Number	Q6Y288
Alternative Names	B3GALT; B3GTL; Beta-1; 3-glucosyltransferase; Beta3Glc-T; Beta-3-glycosyltransferase-like
Background	The protein encoded by this gene is a beta-1,3-glucosyltransferase that transfers glucose to O-linked fucosylglycans on thrombospondin type-1 repeats (TSRs) of several proteins. The

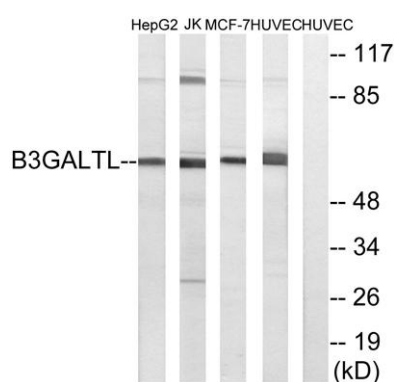
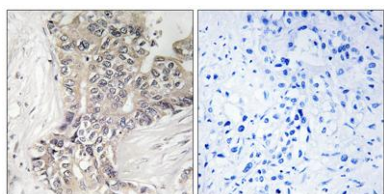


encoded protein is a type II membrane protein. Defects in this gene are a cause of Peters-plus syndrome (PPS).[provided by RefSeq, Mar 2009],



Western Blot analysis of various cells using β -1,3-Gal-TL Polyclonal Antibody diluted at 1:500. Secondary antibody(catalog#:RS0002) was diluted at 1:20000

Immunohistochemistry analysis of paraffin-embedded human liver carcinoma tissue, using B3GALT Antibody. The picture on the right is blocked with the synthesized peptide.



Western blot analysis of lysates from HUVEC, MCF-7, Jurkat, and HepG2 cells, using B3GALT Antibody. The lane on the right is blocked with the synthesized peptide.

