



ZNF608 rabbit pAb

Cat No.:ES3740

For research use only

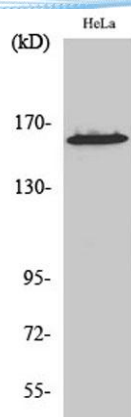
Overview

Product Name	ZNF608 rabbit pAb
Host species	Rabbit
Applications	WB;IHC;IF;ELISA
Species Cross-Reactivity	Human;Mouse
Recommended dilutions	Western Blot: 1/500 - 1/2000. Immunohistochemistry: 1/100 - 1/300. ELISA: 1/5000. Not yet tested in other applications.
Immunogen	The antiserum was produced against synthesized peptide derived from human ZNF608. AA range:1231-1280
Specificity	ZNF608 Polyclonal Antibody detects endogenous levels of ZNF608 protein.
Formulation	Liquid in PBS containing 50% glycerol, 0.5% BSA and 0.02% sodium azide.
Storage	Store at -20°C. Avoid repeated freeze-thaw cycles.
Protein Name	Zinc finger protein 608
Gene Name	ZNF608
Cellular localization	
Purification	The antibody was affinity-purified from rabbit antiserum by affinity-chromatography using epitope-specific immunogen.
Clonality	Polyclonal
Concentration	1 mg/ml
Observed band	160kD
Human Gene ID	57507
Human Swiss-Prot Number	Q9ULD9
Alternative Names	ZNF608; KIAA1281; Zinc finger protein 608; Renal carcinoma antigen NY-REN-36
Background	miscellaneous:Antigen recognized by autologous antibody in patients with renal-cell carcinoma.,PTM:Phosphorylated upon DNA damage, probably by ATM or ATR.,similarity:Contains 1 C2H2-type zinc finger.,



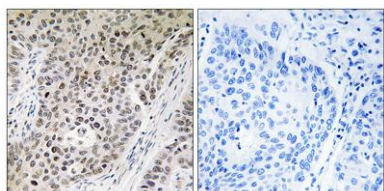


ELK Biotechnology



Western Blot analysis of various cells using ZNF608 Polyclonal Antibody diluted at 1:500. Secondary antibody(catalog#:RS0002) was diluted at 1:20000

Immunohistochemistry analysis of paraffin-embedded human lung carcinoma tissue, using ZNF608 Antibody. The picture on the right is blocked with the synthesized peptide.



+86-27-59760950

ELKbio@ELKbiotech.com

www.elkbiotech.com

23-2, No.388 Gaoxin 2nd Road,Wuhan East Lake Hi-tech Development Zone, Hubei , P.R.C