

# ZNF337 rabbit pAb

Cat No.:ES3736

For research use only

## Overview

Product Name	ZNF337 rabbit pAb
Host species	Rabbit
Applications	WB;IHC;IF;ELISA
Species Cross-Reactivity	Human;Rat;Mouse;
Recommended dilutions	Western Blot: 1/500 - 1/2000. Immunohistochemistry: 1/100 - 1/300. Immunofluorescence: 1/200 - 1/1000. ELISA: 1/20000. Not yet tested in other applications.
Immunogen	The antiserum was produced against synthesized peptide derived from human ZNF337. AA range:471-520
Specificity	ZNF337 Polyclonal Antibody detects endogenous levels of ZNF337 protein.
Formulation	Liquid in PBS containing 50% glycerol, 0.5% BSA and 0.02% sodium azide.
Storage	Store at -20°C. Avoid repeated freeze-thaw cycles.
Protein Name	Zinc finger protein 337
Gene Name	ZNF337
Cellular localization	Nucleus .
Purification	The antibody was affinity-purified from rabbit antiserum by affinity-chromatography using epitope-specific immunogen.
Clonality	Polyclonal
Concentration	1 mg/ml
Observed band	86kD
Human Gene ID	26152
Human Swiss-Prot Number	Q9Y3M9
Alternative Names	ZNF337; Zinc finger protein 337
Background	zinc finger protein 337(ZNF337) Homo sapiens This gene encodes a zinc finger domain containing protein. The function of this protein has yet to be determined. Alternative splicing results in multiple transcript variants. [provided by RefSeq, Mar 2014],



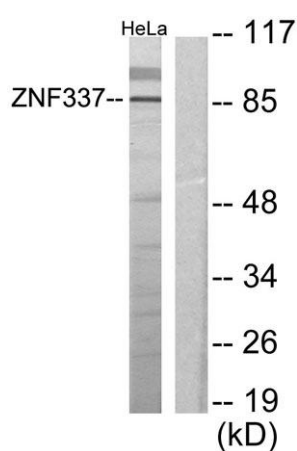


Western Blot analysis of various cells using ZNF337

Polyclonal Antibody. Secondary

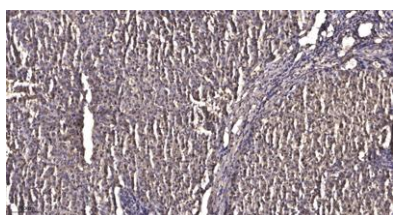
antibody(catalog#:RS0002) was diluted at 1:20000 cells

nucleus extracted by Minute TM Cytoplasmic and Nuclear Fractionation kit (SC-003, Inventbiotech, MN, USA).



Western blot analysis of lysates from HeLa cells, using

ZNF337 Antibody. The lane on the right is blocked with the synthesized peptide.



Immunohistochemical analysis of paraffin-embedded

human liver cancer. 1, Antibody was diluted at 1:200(4° overnight). 2, Tris-EDTA, pH9.0 was used for antigen

retrieval. 3, Secondary antibody was diluted at 1:200(room temperature, 45min).

