

ZIS rabbit pAb

Cat No.:ES3732

For research use only

Overview

Product Name	ZIS rabbit pAb
Host species	Rabbit
Applications	WB;IHC;IF;ELISA
Species Cross-Reactivity	Human;Mouse;Rat
Recommended dilutions	Western Blot: 1/500 - 1/2000. Immunohistochemistry: 1/100 - 1/300. Immunofluorescence: 1/200 - 1/1000. ELISA: 1/10000. Not yet tested in other applications.
Immunogen	The antiserum was produced against synthesized peptide derived from human ZNF265. AA range:106-155
Specificity	ZIS Polyclonal Antibody detects endogenous levels of ZIS protein.
Formulation	Liquid in PBS containing 50% glycerol, 0.5% BSA and 0.02% sodium azide.
Storage	Store at -20°C. Avoid repeated freeze-thaw cycles.
Protein Name	Zinc finger Ran-binding domain-containing protein 2
Gene Name	ZRANB2
Cellular localization	Nucleus .
Purification	The antibody was affinity-purified from rabbit antiserum by affinity-chromatography using epitope-specific immunogen.
Clonality	Polyclonal
Concentration	1 mg/ml
Observed band	34kD
Human Gene ID	9406
Human Swiss-Prot Number	O95218
Alternative Names	ZRANB2; ZIS; ZNF265; Zinc finger Ran-binding domain-containing protein 2; Zinc finger protein 265; Zinc finger; splicing domain:The RanBP2-type zinc fingers mediate binding to RNA.,function:Splice factor required for alternative splicing of TRA2B/SFRS10 transcripts.
Background	

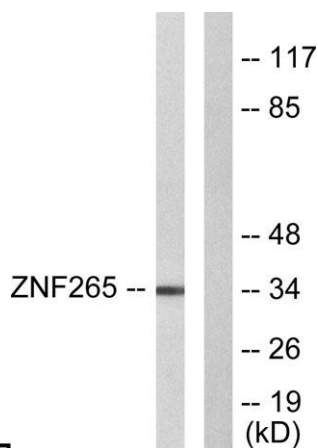
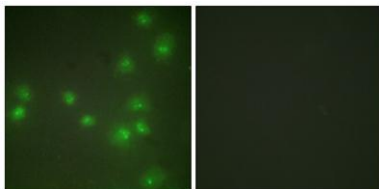


May interfere with constitutive 5'-splice site selection.,PTM:Isoform 2 is phosphorylated on Ser-310 upon DNA damage, probably by ATM or ATR.,sequence caution:Intron retention.,similarity:Belongs to the ZRANB2 family.,similarity:Contains 2 RanBP2-type zinc fingers.,subunit:Interacts with the C-terminal half of SNRNP70, the Arg/Ser-rich domain of XE7 as well as with U2AF1 and CLK1.,



Western Blot analysis of various cells using ZIS Polyclonal Antibody. Secondary antibody(catalog#:RS0002) was diluted at 1:20000 cells nucleus extracted by Minute TM Cytoplasmic and Nuclear Fractionation kit (SC-003,Inventbiotech,MN,USA).

Immunofluorescence analysis of HUVEC cells, using ZNF265 Antibody. The picture on the right is blocked with the synthesized peptide.



Western blot analysis of lysates from HeLa cells, using ZNF265 Antibody. The lane on the right is blocked with the synthesized peptide.





ELK Biotechnology



Immunohistochemical analysis of paraffin-embedded human oophoroma. 1, Antibody was diluted at 1:200(4° overnight). 2, Tris-EDTA,pH9.0 was used for antigen retrieval. 3,Secondary antibody was diluted at 1:200(room temperature, 45min).



+86-27-59760950

ELKbio@ELKbiotech.com

www.elkbiotech.com

23-2, No.388 Gaoxin 2nd Road,Wuhan East Lake Hi-tech Development Zone, Hubei , P.R.C