

# ZFYVE19 rabbit pAb

Cat No.:ES3729

For research use only

## Overview

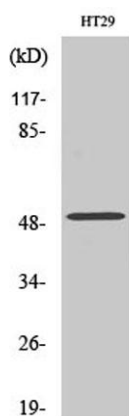
Product Name	ZFYVE19 rabbit pAb
Host species	Rabbit
Applications	WB;IHC;IF;ELISA
Species Cross-Reactivity	Human;Rat;Mouse;
Recommended dilutions	Western Blot: 1/500 - 1/2000. Immunohistochemistry: 1/100 - 1/300. ELISA: 1/40000. Not yet tested in other applications.
Immunogen	The antiserum was produced against synthesized peptide derived from human ZFYVE19. AA range:311-360
Specificity	ZFYVE19 Polyclonal Antibody detects endogenous levels of ZFYVE19 protein.
Formulation	Liquid in PBS containing 50% glycerol, 0.5% BSA and 0.02% sodium azide.
Storage	Store at -20°C. Avoid repeated freeze-thaw cycles.
Protein Name	Zinc finger FYVE domain-containing protein 19
Gene Name	ZFYVE19
Cellular localization	Cytoplasm, cytoskeleton, microtubule organizing center, centrosome . Cleavage furrow . Midbody, Midbody ring . Localizes mainly on centrosomes in interphase and early mitosis. Localizes at the cleavage furrow and midbody ring in late mitosis and cytokines
Purification	The antibody was affinity-purified from rabbit antiserum by affinity-chromatography using epitope-specific immunogen.
Clonality	Polyclonal
Concentration	1 mg/ml
Observed band	50kD
Human Gene ID	84936
Human Swiss-Prot Number	Q96K21
Alternative Names	ZFYVE19; MPFYVE; Zinc finger FYVE domain-containing protein 19; MLL partner



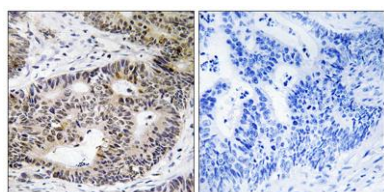


## Background

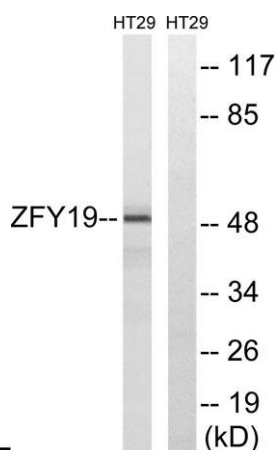
containing FYVE domain  
disease: A chromosomal aberration involving ZFYVE19 is associated with acute myeloblastic leukemia (AML). Translocation t(11;15)(q23;q14) with MLL/HRX., PTM: Phosphorylated upon DNA damage, probably by ATM or ATR., similarity: Contains 1 FYVE-type zinc finger., tissue specificity: Detected in brain, heart, skeletal muscle, kidney and liver.,



Western Blot analysis of various cells using ZFYVE19 Polyclonal Antibody. Secondary antibody (catalog#: RS0002) was diluted at 1:20000



Immunohistochemistry analysis of paraffin-embedded human colon carcinoma tissue, using ZFYVE19 Antibody. The picture on the right is blocked with the synthesized peptide.



Western blot analysis of lysates from HT-29 cells, using ZFYVE19 Antibody. The lane on the right is blocked with the synthesized peptide.





**ELK Biotechnology**



+86-27-59760950

[ELKbio@ELKbiotech.com](mailto:ELKbio@ELKbiotech.com)

[www.elkbiotech.com](http://www.elkbiotech.com)

23-2, No.388 Gaoxin 2nd Road,Wuhan East Lake Hi-tech Development Zone, Hubei , P.R.C