



ZAC1 rabbit pAb

Cat No.:ES3721

For research use only

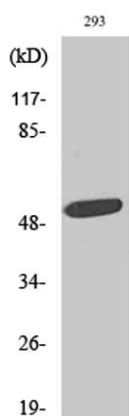
Overview

Product Name	ZAC1 rabbit pAb
Host species	Rabbit
Applications	WB;ELISA
Species Cross-Reactivity	Human;Rat;Mouse;
Recommended dilutions	Western Blot: 1/500 - 1/2000. ELISA: 1/10000. Not yet tested in other applications.
Immunogen	The antiserum was produced against synthesized peptide derived from human PLAGL1. AA range:311-360
Specificity	ZAC1 Polyclonal Antibody detects endogenous levels of ZAC1 protein.
Formulation	Liquid in PBS containing 50% glycerol, 0.5% BSA and 0.02% sodium azide.
Storage	Store at -20°C. Avoid repeated freeze-thaw cycles.
Protein Name	Zinc finger protein PLAGL1
Gene Name	PLAGL1
Cellular localization	Nucleus .
Purification	The antibody was affinity-purified from rabbit antiserum by affinity-chromatography using epitope-specific immunogen.
Clonality	Polyclonal
Concentration	1 mg/ml
Observed band	50kD
Human Gene ID	5325
Human Swiss-Prot Number	Q9UM63
Alternative Names	PLAGL1; LOT1; ZAC; Zinc finger protein PLAGL1; Lost on transformation 1; LOT-1; Pleiomorphic adenoma-like protein 1; Tumor supressor ZAC
Background	This gene encodes a C2H2 zinc finger protein that functions as a suppressor of cell growth. This gene is often deleted or methylated and silenced in cancer cells. In addition, overexpression of this gene during fetal development is thought to be the causal factor

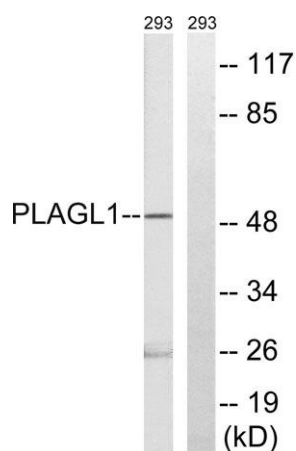




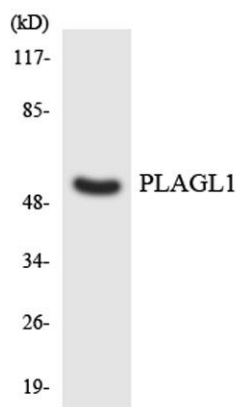
for transient neonatal diabetes mellitus (TNDM). Alternative splicing and the use of alternative promoters results in multiple transcript variants encoding two different protein isoforms. The P1 downstream promoter of this gene is imprinted, with preferential expression from the paternal allele in many tissues. [provided by RefSeq, Nov 2015],



Western Blot analysis of various cells using ZAC1 Polyclonal Antibody. Secondary antibody(catalog#:RS0002) was diluted at 1:20000 cells nucleus extracted by Minute TM Cytoplasmic and Nuclear Fractionation kit (SC-003, Inventbiotech, MN, USA).



Western blot analysis of lysates from 293 cells, using PLAGL1 Antibody. The lane on the right is blocked with the synthesized peptide.



Western blot analysis of the lysates from HeLa cells using PLAGL1 antibody.

