



XRN2 rabbit pAb

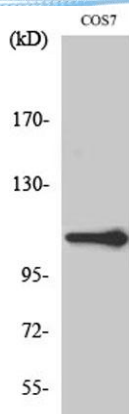
Cat No.:ES3717

For research use only

Overview

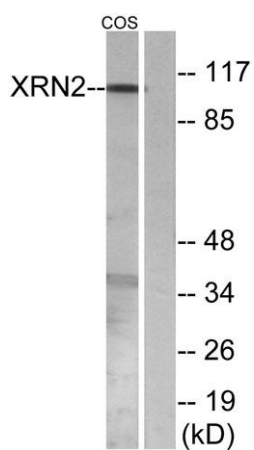
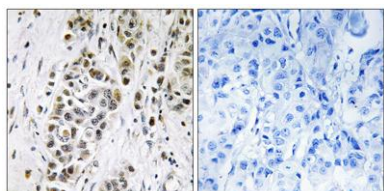
Product Name	XRN2 rabbit pAb
Host species	Rabbit
Applications	WB;IHC;IF;ELISA
Species Cross-Reactivity	Human;Mouse;Monkey
Recommended dilutions	Western Blot: 1/500 - 1/2000. Immunohistochemistry: 1/100 - 1/300. ELISA: 1/20000. Not yet tested in other applications.
Immunogen	The antiserum was produced against synthesized peptide derived from human XRN2. AA range:81-130
Specificity	XRN2 Polyclonal Antibody detects endogenous levels of XRN2 protein.
Formulation	Liquid in PBS containing 50% glycerol, 0.5% BSA and 0.02% sodium azide.
Storage	Store at -20°C. Avoid repeated freeze-thaw cycles.
Protein Name	5'-3' exoribonuclease 2
Gene Name	XRN2
Cellular localization	Nucleus, nucleolus .
Purification	The antibody was affinity-purified from rabbit antiserum by affinity-chromatography using epitope-specific immunogen.
Clonality	Polyclonal
Concentration	1 mg/ml
Observed band	108kD
Human Gene ID	22803
Human Swiss-Prot Number	Q9H0D6
Alternative Names	XRN2; 5'-3' exoribonuclease 2; DHM1-like protein; DHP protein
Background	This gene encodes a 5'-3' exonuclease that promotes transcription termination at cotranscriptional cleavage sites. Alternative splicing results in multiple transcript variants encoding different isoforms. [provided by RefSeq, Dec 2015],





Western Blot analysis of various cells using XRN2 Polyclonal Antibody diluted at 1:1000. Secondary antibody(catalog#:RS0002) was diluted at 1:20000 cells nucleus extracted by Minute TM Cytoplasmic and Nuclear Fractionation kit (SC-003, Inventbiotech, MN, USA)

Immunohistochemistry analysis of paraffin-embedded human breast carcinoma tissue, using XRN2 Antibody. The picture on the right is blocked with the synthesized peptide.



Western blot analysis of lysates from COS7 cells, using XRN2 Antibody. The lane on the right is blocked with the synthesized peptide.

