

XRCC3 rabbit pAb

Cat No.:ES3715

For research use only

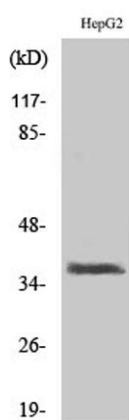
Overview

Product Name	XRCC3 rabbit pAb
Host species	Rabbit
Applications	WB;IHC;IF;ELISA
Species Cross-Reactivity	Human;Rat;Mouse;
Recommended dilutions	Western Blot: 1/500 - 1/2000. Immunohistochemistry: 1/100 - 1/300. ELISA: 1/10000. Not yet tested in other applications.
Immunogen	The antiserum was produced against synthesized peptide derived from human XRCC3. AA range:41-90
Specificity	XRCC3 Polyclonal Antibody detects endogenous levels of XRCC3 protein.
Formulation	Liquid in PBS containing 50% glycerol, 0.5% BSA and 0.02% sodium azide.
Storage	Store at -20°C. Avoid repeated freeze-thaw cycles.
Protein Name	DNA repair protein XRCC3
Gene Name	XRCC3
Cellular localization	Nucleus. Cytoplasm. Cytoplasm, perinuclear region. Mitochondrion. Accumulates in discrete nuclear foci prior to DNA damage, and these foci persist throughout the time course of DNA repair.
Purification	The antibody was affinity-purified from rabbit antiserum by affinity-chromatography using epitope-specific immunogen.
Clonality	Polyclonal
Concentration	1 mg/ml
Observed band	38kD
Human Gene ID	7517
Human Swiss-Prot Number	O43542
Alternative Names	XRCC3; DNA repair protein XRCC3; X-ray repair cross-complementing protein 3
Background	This gene encodes a member of the RecA/Rad51-related protein family that participates in homologous recombination to maintain

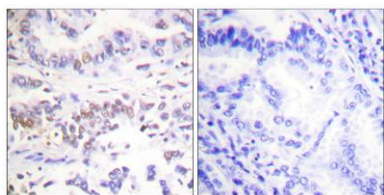




chromosome stability and repair DNA damage. This gene functionally complements Chinese hamster irs1SF, a repair-deficient mutant that exhibits hypersensitivity to a number of different DNA-damaging agents and is chromosomally unstable. A rare microsatellite polymorphism in this gene is associated with cancer in patients of varying radiosensitivity. Alternatively spliced transcript variants encoding the same protein have been identified. [provided by RefSeq, Jul 2008],



Western Blot analysis of various cells using XRCC3 Polyclonal Antibody. Secondary antibody(catalog#:RS0002) was diluted at 1:20000 cells nucleus extracted by Minute TM Cytoplasmic and Nuclear Fractionation kit (SC-003, Inventbiotech, MN, USA).

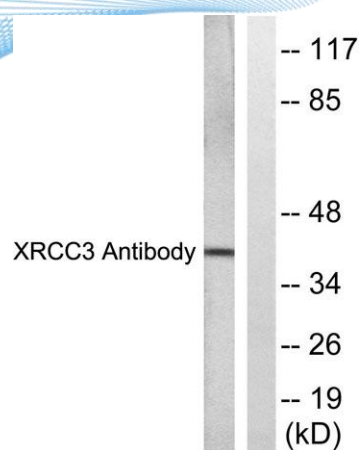


Immunohistochemistry analysis of paraffin-embedded human lung carcinoma tissue, using XRCC3 Antibody. The picture on the right is blocked with the synthesized peptide.





ELK Biotechnology



Western blot analysis of lysates from HepG2 cells, treated with Adriamycin 0.5uM 5h, using XRCC3 Antibody. The lane on the right is blocked with the synthesized peptide.



+86-27-59760950

ELKbio@ELKbiotech.com

www.elkbiotech.com

23-2, No.388 Gaoxin 2nd Road, Wuhan East Lake Hi-tech Development Zone, Hubei, P.R.C.