

UBE2D2 rabbit pAb

Cat No.:ES3665

For research use only

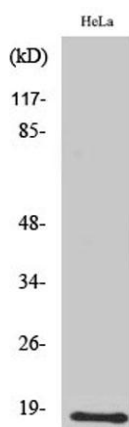
Overview

Product Name	UBE2D2 rabbit pAb
Host species	Rabbit
Applications	WB;ELISA
Species Cross-Reactivity	Human;Mouse;Rat
Recommended dilutions	Western Blot: 1/500 - 1/2000. ELISA: 1/10000. Not yet tested in other applications.
Immunogen	The antiserum was produced against synthesized peptide derived from human UBE2D2. AA range:98-147
Specificity	UBE2D2 Polyclonal Antibody detects endogenous levels of UBE2D2 protein.
Formulation	Liquid in PBS containing 50% glycerol, 0.5% BSA and 0.02% sodium azide.
Storage	Store at -20°C. Avoid repeated freeze-thaw cycles.
Protein Name	Ubiquitin-conjugating enzyme E2 D2
Gene Name	UBE2D2
Cellular localization	ubiquitin ligase complex,nucleoplasm,cytosol,protein complex,extracellular exosome,
Purification	The antibody was affinity-purified from rabbit antiserum by affinity-chromatography using epitope-specific immunogen.
Clonality	Polyclonal
Concentration	1 mg/ml
Observed band	17kD
Human Gene ID	7322
Human Swiss-Prot Number	P62837
Alternative Names	UBE2D2; UBC4; UBC5B; UBCH4; UBCH5B; Ubiquitin-conjugating enzyme E2 D2; Ubiquitin carrier protein D2; Ubiquitin-conjugating enzyme E2(17)KB 2; Ubiquitin-conjugating enzyme E2-17 kDa 2; Ubiquitin-protein ligase D2
Background	Regulated degradation of misfolded, damaged or

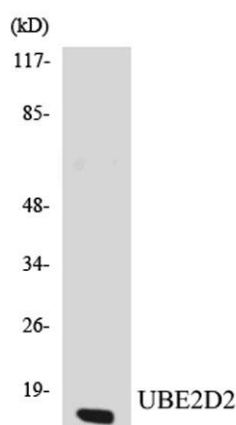




short-lived proteins in eukaryotes occurs via the ubiquitin (Ub)-proteasome system (UPS). An integral part of the UPS system is the ubiquitination of target proteins and covalent linkage of Ub-containing proteins to form polymeric chains, marking them as targets for 26S proteasome-mediated degradation. Ubiquitination of proteins is mediated by a cascade of enzymes which includes E1 (ubiquitin activating), E2 (ubiquitin conjugating), and E3 (ubiquitin ligases) enzymes. This gene encodes a member of the E2 enzyme family. Substrates of this enzyme include the tumor suppressor protein p53 and peroxisomal biogenesis factor 5 (PEX5). Alternative splicing results in multiple transcript variants of this gene. [provided by RefSeq, May 2013],



Western Blot analysis of various cells using UBE2D2 Polyclonal Antibody diluted at 1:2000. Secondary antibody(catalog#:RS0002) was diluted at 1:20000



Western blot analysis of the lysates from K562 cells using UBE2D2 antibody.

