

# Tubulin $\alpha$ -3C/D/E rabbit pAb

Cat No.:ES3655

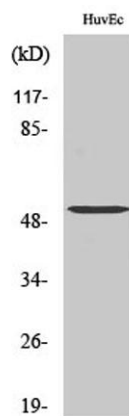
For research use only

## Overview

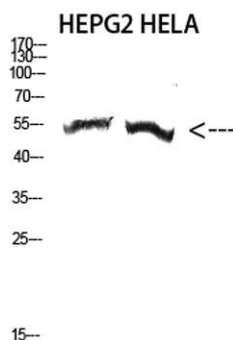
Product Name	Tubulin $\alpha$ -3C/D/E rabbit pAb
Host species	Rabbit
Applications	WB;ELISA
Species Cross-Reactivity	Human;Mouse;Rat
Recommended dilutions	Western Blot: 1/500 - 1/2000. ELISA: 1/5000. Not yet tested in other applications.
Immunogen	The antiserum was produced against synthesized peptide derived from human TUBA3C/E. AA range:201-250
Specificity	Tubulin $\alpha$ -3C/D/E Polyclonal Antibody detects endogenous levels of Tubulin $\alpha$ -3C/D/E protein.
Formulation	Liquid in PBS containing 50% glycerol, 0.5% BSA and 0.02% sodium azide.
Storage	Store at -20°C. Avoid repeated freeze-thaw cycles.
Protein Name	Tubulin alpha-3C/D chain/Tubulin alpha-3E chain
Gene Name	TUBA3C/D/TUBA3E
Cellular localization	nucleus,cytoplasm,microtubule,
Purification	The antibody was affinity-purified from rabbit antiserum by affinity-chromatography using epitope-specific immunogen.
Clonality	Polyclonal
Concentration	1 mg/ml
Observed band	50kD
Human Gene ID	113457/7278/112714
Human Swiss-Prot Number	Q13748/Q6PEY2
Alternative Names	TUBA3C; TUBA2; TUBA3D; Tubulin alpha-3C/D chain; Alpha-tubulin 2; Alpha-tubulin 3C/D; Tubulin alpha-2 chain; TUBA3E; Tubulin alpha-3E chain; Alpha-tubulin 3E
Background	Microtubules of the eukaryotic cytoskeleton perform essential and diverse functions and are composed of a heterodimer of alpha and beta tubulin. The genes encoding these microtubule



constituents are part of the tubulin superfamily, which is composed of six distinct families. Genes from the alpha, beta and gamma tubulin families are found in all eukaryotes. The alpha and beta tubulins represent the major components of microtubules, while gamma tubulin plays a critical role in the nucleation of microtubule assembly. There are multiple alpha and beta tubulin genes and they are highly conserved among and between species. This gene is an alpha tubulin gene that encodes a protein 99% identical to the mouse testis-specific Tuba3 and Tuba7 gene products. This gene is located in the 13q11 region, which is associated with the genetic diseases Clouston hidrotic ectodermal dysplasia and Kabuki syndrome. [provid



Western Blot analysis of various cells using Tubulin  $\alpha$ -3C/D/E Polyclonal Antibody diluted at 1:2000. Secondary antibody(catalog#:RS0002) was diluted at 1:20000



Western Blot analysis of HEPG2 HELA cells using Antibody diluted at 2000. Secondary antibody(catalog#:RS0002) was diluted at 1:20000

