



Tuberin rabbit pAb

Cat No.:ES3653

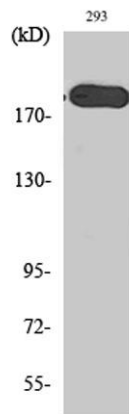
For research use only

Overview

| | |
|--------------------------|---|
| Product Name | Tuberin rabbit pAb |
| Host species | Rabbit |
| Applications | WB;IHC;IF;ELISA |
| Species Cross-Reactivity | Human;Mouse;Rat |
| Recommended dilutions | Western Blot: 1/500 - 1/2000. Immunohistochemistry: 1/100 - 1/300. Immunofluorescence: 1/200 - 1/1000. ELISA: 1/10000. Not yet tested in other applications. |
| Immunogen | The antiserum was produced against synthesized peptide derived from human Tuberin/TSC2. AA range:905-954 |
| Specificity | Tuberin Polyclonal Antibody detects endogenous levels of Tuberin protein. |
| Formulation | Liquid in PBS containing 50% glycerol, 0.5% BSA and 0.02% sodium azide. |
| Storage | Store at -20°C. Avoid repeated freeze-thaw cycles. |
| Protein Name | Tuberin |
| Gene Name | TSC2 |
| Cellular localization | Cytoplasm. Membrane; Peripheral membrane protein. At steady state found in association with membranes. |
| Purification | The antibody was affinity-purified from rabbit antiserum by affinity-chromatography using epitope-specific immunogen. |
| Clonality | Polyclonal |
| Concentration | 1 mg/ml |
| Observed band | 200kD |
| Human Gene ID | 7249 |
| Human Swiss-Prot Number | P49815 |
| Alternative Names | TSC2; TSC4; Tuberin; Tuberous sclerosis 2 protein |
| Background | Mutations in this gene lead to tuberous sclerosis complex. Its gene product is believed to be a tumor suppressor and is able to stimulate specific GTPases. |

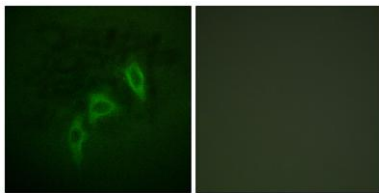


The protein associates with hamartin in a cytosolic complex, possibly acting as a chaperone for hamartin. Alternative splicing results in multiple transcript variants encoding different isoforms. [provided by RefSeq, Jul 2008],

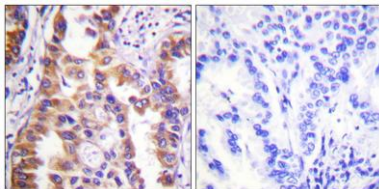


Western Blot analysis of various cells using Tuberin Polyclonal Antibody diluted at 1:1000. Secondary antibody(catalog#:RS0002) was diluted at 1:20000

Immunofluorescence analysis of HepG2 cells, using Tuberin/TSC2 Antibody. The picture on the right is blocked with the synthesized peptide.

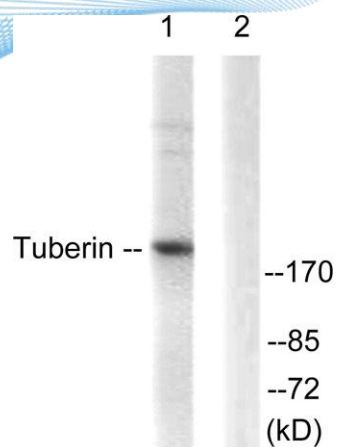


Immunohistochemistry analysis of paraffin-embedded human lung carcinoma tissue, using Tuberin/TSC2 Antibody. The picture on the right is blocked with the synthesized peptide.





ELK Biotechnology



Western blot analysis of lysates from 293 cells, treated with Anisomycin 25ug/ml 30', using Tuberin/TSC2 Antibody. The lane on the right is blocked with the synthesized peptide.



+86-27-59760950

ELKbio@ELKbiotech.com

www.elkbiotech.com

23-2, No.388 Gaoxin 2nd Road, Wuhan East Lake Hi-tech Development Zone, Hubei, P.R.C.