



Trypsin-1 rabbit pAb

Cat No.:ES3648

For research use only

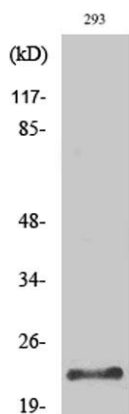
Overview

Product Name	Trypsin-1 rabbit pAb
Host species	Rabbit
Applications	WB;ELISA
Species Cross-Reactivity	Human;Rat;Mouse;
Recommended dilutions	Western Blot: 1/500 - 1/2000. ELISA: 1/10000. Not yet tested in other applications.
Immunogen	The antiserum was produced against synthesized peptide derived from human Trypsin-1. AA range:60-109
Specificity	Trypsin-1 Polyclonal Antibody detects endogenous levels of Trypsin-1 protein.
Formulation	Liquid in PBS containing 50% glycerol, 0.5% BSA and 0.02% sodium azide.
Storage	Store at -20°C. Avoid repeated freeze-thaw cycles.
Protein Name	Trypsin-1
Gene Name	PRSS1
Cellular localization	Secreted, extracellular space.
Purification	The antibody was affinity-purified from rabbit antiserum by affinity-chromatography using epitope-specific immunogen.
Clonality	Polyclonal
Concentration	1 mg/ml
Observed band	23kD
Human Gene ID	5644
Human Swiss-Prot Number	P07477
Alternative Names	PRSS1; TRP1; TRY1; TRYP1; Trypsin-1; Beta-trypsin; Cationic trypsinogen; Serine protease 1; Trypsin I
Background	This gene encodes a trypsinogen, which is a member of the trypsin family of serine proteases. This enzyme is secreted by the pancreas and cleaved to its active form in the small intestine. It is active on peptide linkages involving the carboxyl group of lysine or arginine. Mutations in this gene are

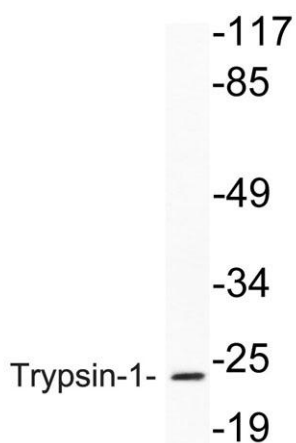




associated with hereditary pancreatitis. This gene and several other trypsinogen genes are localized to the T cell receptor beta locus on chromosome 7. [provided by RefSeq, Jul 2008],



Western Blot analysis of various cells using Trypsin-1 Polyclonal Antibody diluted at 1:500. Secondary antibody(catalog#:RS0002) was diluted at 1:20000



Western blot analysis of lysate from 293 cells, using Trypsin-1 antibody.

