

TRADD rabbit pAb

Cat No.:ES3633

For research use only

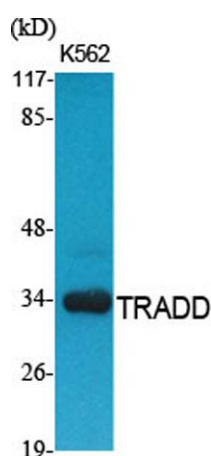
Overview

Product Name	TRADD rabbit pAb
Host species	Rabbit
Applications	WB;IHC;IF;ELISA
Species Cross-Reactivity	Human;Mouse;Monkey
Recommended dilutions	Western Blot: 1/500 - 1/2000. Immunohistochemistry: 1/100 - 1/300. ELISA: 1/10000. Not yet tested in other applications.
Immunogen	The antiserum was produced against synthesized peptide derived from human TRADD. AA range:251-300
Specificity	TRADD Polyclonal Antibody detects endogenous levels of TRADD protein.
Formulation	Liquid in PBS containing 50% glycerol, 0.5% BSA and 0.02% sodium azide.
Storage	Store at -20°C. Avoid repeated freeze-thaw cycles.
Protein Name	Tumor necrosis factor receptor type 1-associated DEATH domain protein
Gene Name	TRADD
Cellular localization	Nucleus . Cytoplasm . Cytoplasm, cytoskeleton . Shuttles between the cytoplasm and the nucleus. .
Purification	The antibody was affinity-purified from rabbit antiserum by affinity-chromatography using epitope-specific immunogen.
Clonality	Polyclonal
Concentration	1 mg/ml
Observed band	34kD
Human Gene ID	8717
Human Swiss-Prot Number	Q15628
Alternative Names	TRADD; Tumor necrosis factor receptor type 1-associated DEATH domain protein; TNFR1-associated DEATH domain protein; TNFRSF1A-associated via death domain
Background	The protein encoded by this gene is a death domain





containing adaptor molecule that interacts with TNFRSF1A/TNFR1 and mediates programmed cell death signaling and NF-kappaB activation. This protein binds adaptor protein TRAF2, reduces the recruitment of inhibitor-of-apoptosis proteins (IAPs) by TRAF2, and thus suppresses TRAF2 mediated apoptosis. This protein can also interact with receptor TNFRSF6/FAS and adaptor protein FADD/MORT1, and is involved in the Fas-induced cell death pathway. [provided by RefSeq, Jul 2008],



Western Blot analysis of various cells using TRADD Polyclonal Antibody. Secondary antibody(catalog#:RS0002) was diluted at 1:20000



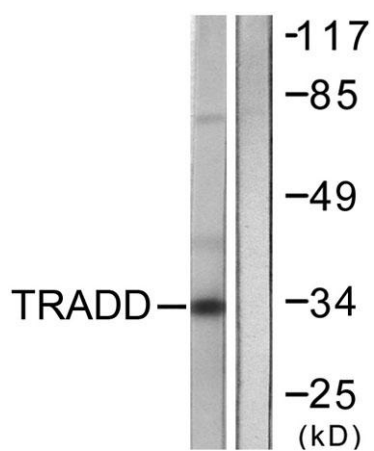
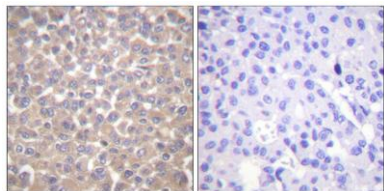
Western Blot analysis of COS7 cells using TRADD Polyclonal Antibody. Secondary antibody(catalog#:RS0002) was diluted at 1:20000





ELK Biotechnology

Immunohistochemistry analysis of paraffin-embedded human breast carcinoma tissue, using TRADD Antibody. The picture on the right is blocked with the synthesized peptide.



Western blot analysis of lysates from COS7 cells, using TRADD Antibody. The lane on the right is blocked with the synthesized peptide.



+86-27-59760950

ELKbio@ELKbiotech.com

www.elkbiotech.com

23-2, No.388 Gaoxin 2nd Road, Wuhan East Lake Hi-tech Development Zone, Hubei, P.R.C