



# TIMP-3 rabbit pAb

Cat No.:ES3611

For research use only

## Overview

Product Name	TIMP-3 rabbit pAb
Host species	Rabbit
Applications	WB;ELISA;IHC
Species Cross-Reactivity	Human;Mouse;Rat
Recommended dilutions	WB 1:500-2000;IHC-p 1:50-300; ELISA 2000-20000
Immunogen	The antiserum was produced against synthesized peptide derived from human TIMP3. AA range:91-140
Specificity	TIMP-3 Polyclonal Antibody detects endogenous levels of TIMP-3 protein.
Formulation	Liquid in PBS containing 50% glycerol, 0.5% BSA and 0.02% sodium azide.
Storage	Store at -20°C. Avoid repeated freeze-thaw cycles.
Protein Name	Metalloproteinase inhibitor 3
Gene Name	TIMP3
Cellular localization	Secreted, extracellular space, extracellular matrix.
Purification	The antibody was affinity-purified from rabbit antiserum by affinity-chromatography using epitope-specific immunogen.
Clonality	Polyclonal
Concentration	1 mg/ml
Observed band	25kD
Human Gene ID	7078
Human Swiss-Prot Number	P35625
Alternative Names	TIMP3; Metalloproteinase inhibitor 3; Protein MIG-5; Tissue inhibitor of metalloproteinases 3; TIMP-3
Background	This gene belongs to the TIMP gene family. The proteins encoded by this gene family are inhibitors of the matrix metalloproteinases, a group of peptidases involved in degradation of the extracellular matrix (ECM). Expression of this gene is induced in response to mitogenic stimulation and

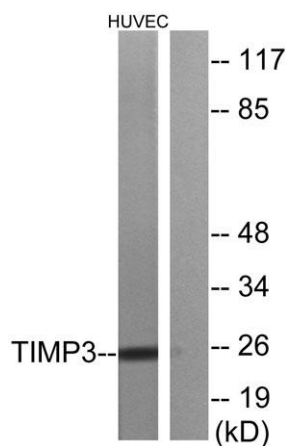




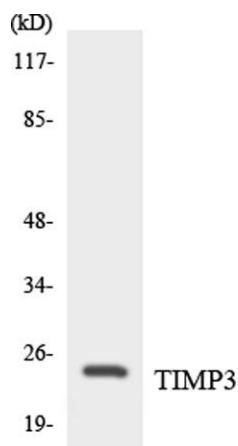
this netrin domain-containing protein is localized to the ECM. Mutations in this gene have been associated with the autosomal dominant disorder Sorsby's fundus dystrophy. [provided by RefSeq, Jul 2008],



Western Blot analysis of various cells using TIMP-3 Polyclonal Antibody diluted at 1:1000. Secondary antibody(catalog#:RS0002) was diluted at 1:20000



Western blot analysis of lysates from HUVEC cells, using TIMP3 Antibody. The lane on the right is blocked with the synthesized peptide.

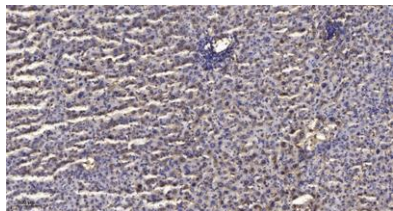


Western blot analysis of the lysates from HepG2 cells using TIMP3 antibody.





**ELK Biotechnology**



Immunohistochemical analysis of paraffin-embedded human liver cancer. 1, Antibody was diluted at 1:200(4° overnight). 2, Tris-EDTA,pH9.0 was used for antigen retrieval. 3,Secondary antibody was diluted at 1:200(room temperature, 45min).



+86-27-59760950

ELKbio@ELKbiotech.com

[www.elkbiotech.com](http://www.elkbiotech.com)

23-2, No.388 Gaoxin 2nd Road,Wuhan East Lake Hi-tech Development Zone, Hubei , P.R.C