



TH rabbit pAb

Cat No.:ES3602

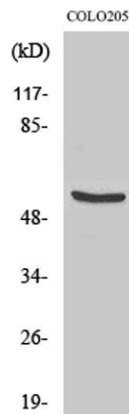
For research use only

Overview

Product Name	TH rabbit pAb
Host species	Rabbit
Applications	WB;IHC;IF;ELISA
Species Cross-Reactivity	Rat
Recommended dilutions	Western Blot: 1/500 - 1/2000.IHC-p:1:50-300 ELISA: 1/20000. Not yet tested in other applications.
Immunogen	The antiserum was produced against synthesized peptide derived from human Tyrosine Hydroxylase. AA range:5-54
Specificity	TH Polyclonal Antibody detects endogenous levels of TH protein.
Formulation	Liquid in PBS containing 50% glycerol, 0.5% BSA and 0.02% sodium azide.
Storage	Store at -20°C. Avoid repeated freeze-thaw cycles.
Protein Name	Tyrosine 3-monooxygenase
Gene Name	TH
Cellular localization	
Purification	The antibody was affinity-purified from rabbit antiserum by affinity-chromatography using epitope-specific immunogen.
Clonality	Polyclonal
Concentration	1 mg/ml
Observed band	58kD
Human Gene ID	
Human Swiss-Prot Number	
Alternative Names	TH; TYH; Tyrosine 3-monooxygenase; Tyrosine 3-hydroxylase; TH
Background	Tyrosine 3-monooxygenase encoded by TH is involved in the conversion of tyrosine to dopamine. It is the rate-limiting enzyme in the synthesis of catecholamines, hence plays a key role in the physiology of adrenergic neurons. Mutations in this gene have be associated with autosomal recessive

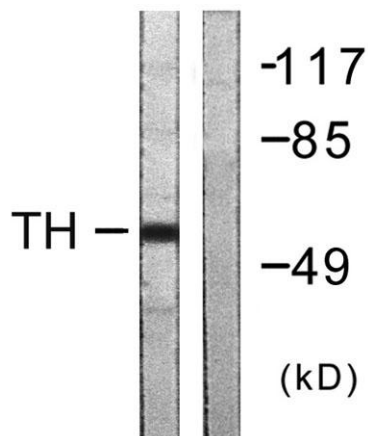
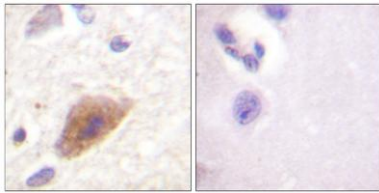


Segawa syndrome. Alternatively spliced transcript variants encoding different isoforms have been noted for this gene.



Western Blot analysis of various cells using TH Polyclonal Antibody

Immunohistochemistry analysis of paraffin-embedded human brain tissue, using Tyrosine Hydroxylase Antibody. The picture on the right is blocked with the synthesized peptide.



Western blot analysis of lysates from COLO205 cells, using Tyrosine Hydroxylase Antibody. The lane on the right is blocked with the synthesized peptide.

